

Technical specifications

Power Supply

220/110 Vac at 50/60 Hz; 20-40 Vdc

Power Consumption

70 W at 220 Vac; 50 W at 24 Vdc

Display

150 x 200 mm graphic dot-matrix super twist LC screen with adjustable contrast and backlight

Printer

External printer, HP desk Jet 800 series

Type of recording paper

A4 standard

Memory

Last 24 hours of recorded data; operational settings when powered down

Ranges

Selectable from 0-10 m to 0-1600 m with compensation for draft.

Frequencies

38, 50 and 200 kHz selectable at unit

Transmitter output power

38-200 kHz / 1 kW, 50 kHz / 500 W adjustable output power

Depth Alarms

Deep and shallow water limits

Calendar / clock

Year-month-day/hours-minutes-seconds

(24 hour system)

Interface outputs

Trigger and bottom pulses; analogue 4-20 mA and 0-10 Vdc for depth; dedicated video; NMEA 0183 for depth; alarm relay; output for VGA repeater; RS-232C, PC parallel port interface

Interface inputs

100/200 pulses for speed; NMEA 0183 for speed, position, heading and time; remote keyboard for use with repeater; remote start of printer

Languages

English, French, German, Spanish, Norwegian, Russian

Options

Remote digital depth indicator and keyboard

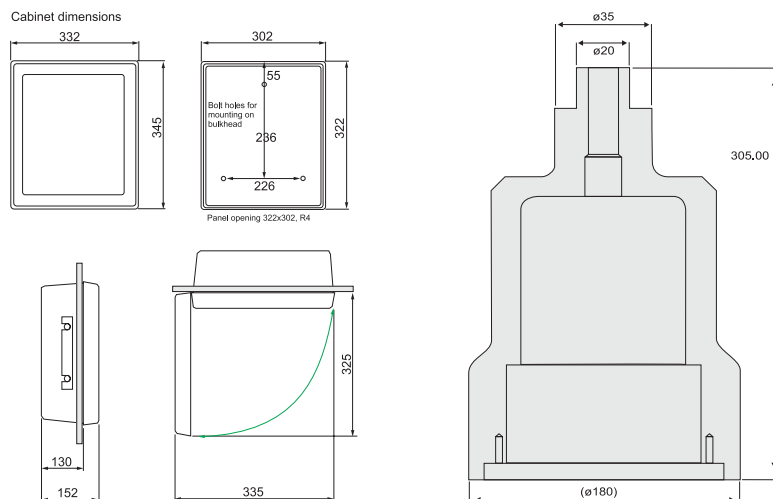
Classification

Complies with IMO Performance Standards for Echo Sounding Equipment Resolution A.224 (VII)

Service

Available in all major ports

Installation dimensions



KONGSBERG SIMRAD AS

Strandpromenaden 50 PO.Box 111 N-3191 Horten Norway

Telephone +47 33 02 38 00 Telefax +47 33 04 44 24 www.kongsberg.com



EN 250



KONGSBERG

Navigation Echo Sounder

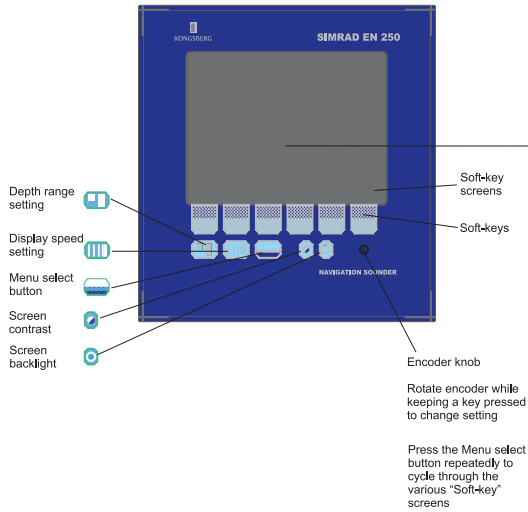


System description

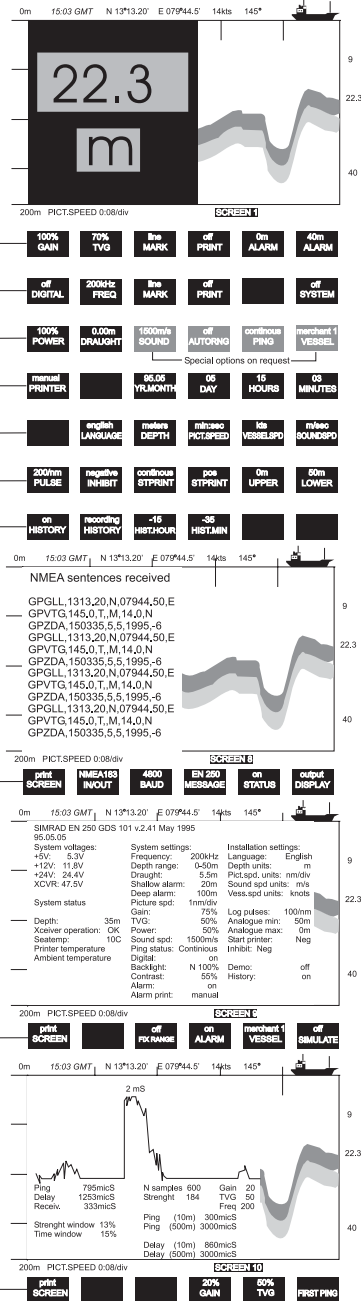
The EN 250 is a navigation sounder equipped with a large, high-resolution LCD. Graphic echo sounder data consisting of the immediate depth and a record of soundings are continuously displayed. Interfaces for remote equipment are available including ports for NMEA 0183 (input/output) and a standard PC parallel printer.

Navigational data regarding depth and time are stored in the internal memory providing a history of the last 24-hours. IMO Performance Standards for Echo Sounding Equipment (Resolution A.224 (VII)) are met or exceeded.

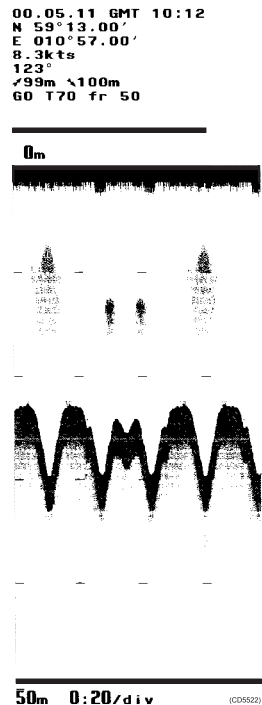
Control and display cabinet



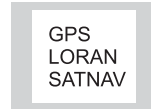
Soft-key screens



Printer presentation



Navigator



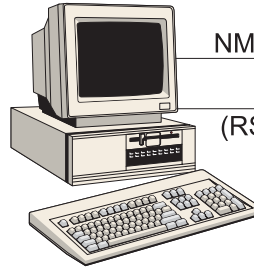
Speed log



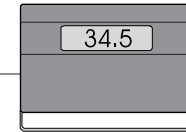
Printer



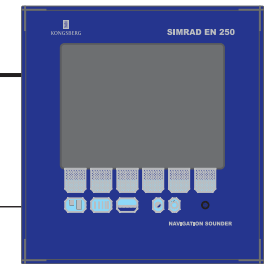
Computer system



Remote digital depth indicator



Cabinet



220VAC/24VDC
 2x1.5 sq. mm.
 Screened
 Yard supply

Superstructure

Hull

External alarm

0-10V/4-20mA
 Analogue depth
 information

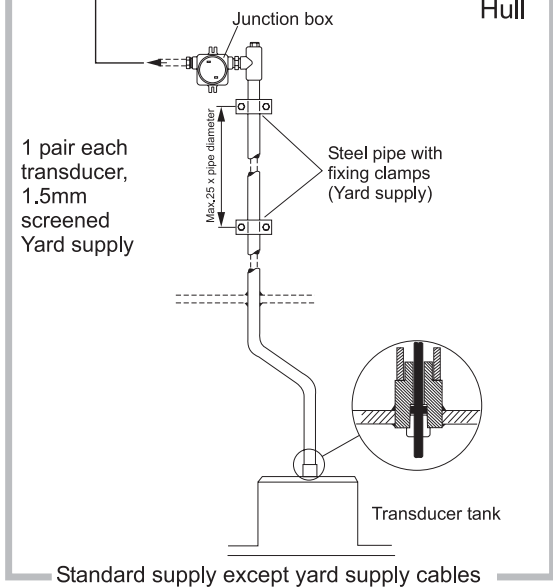
Optional external keyboard

Optional remote VGA
 monitor

Optional remote LCD
 monitor

PT200 Temperature
 sensor input

Remote printer start



(CD1627B)

(CD1630C)

(CD5522)