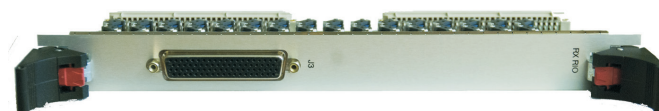
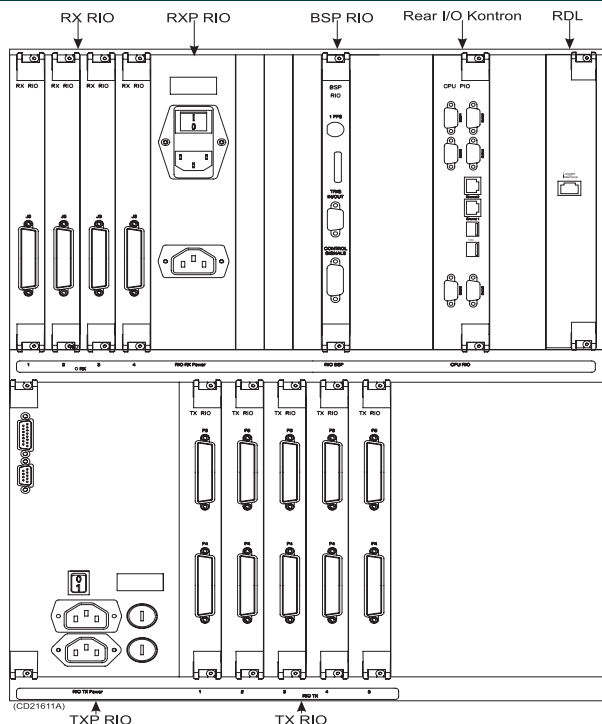


# EM 710-MK2 UPGRADE



KONGSBERG



CD021685-003

## HOW TO UPGRADE FROM EM710 TO EM 710-MK2

Replace the RX RIO boards in the transceiver unit.

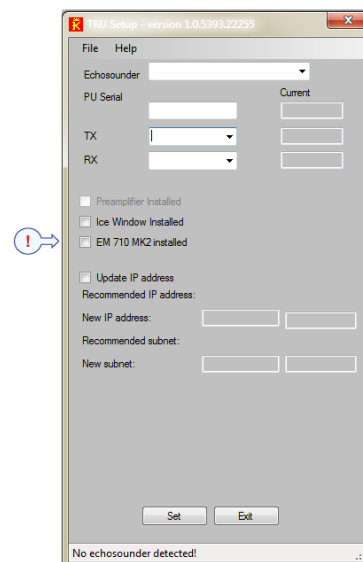
Please refer to the EM 710 maintenance manual [851-164852] for details:

- Transceiver Unit rear view
- Transceiver Unit – Cable configuration
- Receive array cable markings

When connecting the cables, verify that each cable is connected to the correct RX RIO board.

Software: Install SW release 3.0.0 or later for EM 710

Configuration of HW: Find the short guide in this folder of the hydrographic workstation:  
“C:\Program Files (x86)\Kongsberg Maritime\SIS\PU\EM710\Update\Support\TRUSetup\TRUSetup\_short\_guide.pdf”



Run the program “TRUSetup.exe” and follow the instruction in the short guide. Select **EM 710 MK2 installed** to upgrade to MK2.

400054/A January 2015



KONGSBERG