

EM[®] 2000



KONGSBERG



392524/A 2014-04-22

NEWS BULLETIN - END OF LIFE

Kongsberg Maritime aims to provide support to current and previous generations of products. However, the availability to key components is a limiting factor for support over time.

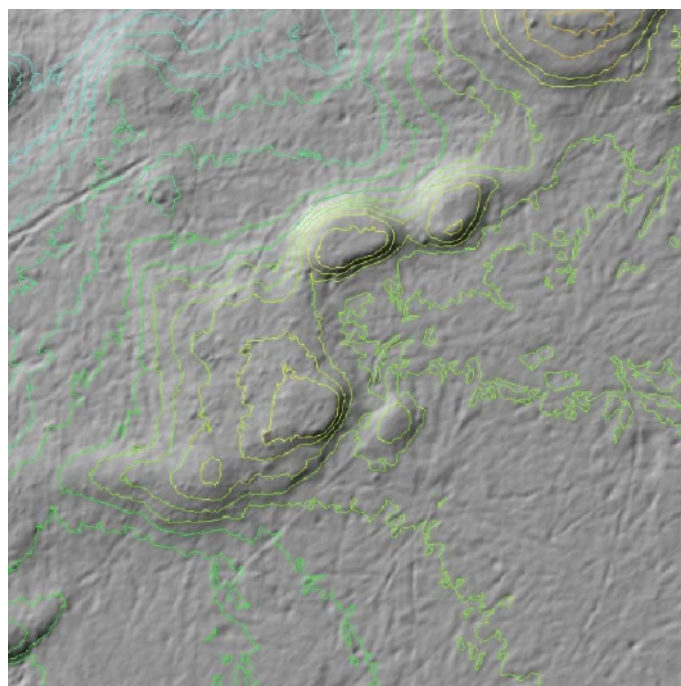
EM 2000 have reached end of life. The critical factor is the CPU board, other part may still be available. Please contact Customer support. For EM 2000 AUV PU an upgrade kit for a new CPU board is available. The CPU upgrade kit is available until 2014-06-30.

EM 2000 as product is replaced by EM 2040 and EM 2040C.

Reservation: Due to possible obsolescence in materials and components, performance and prices are subject to change.

EM[®] is a registered trademark of Kongsberg Maritime AS in Norway and other countries.

Specifications subject to change without any further notice.



Kongsberg Maritime AS
Strandpromenaden 50
P.O.Box 111
N-3191 Horten
Norway

Telephone: +47 33 02 38 00
Telefax: +47 33 04 47 53
www.km.kongsberg.com
E-mail: subsea@kongsberg.com



KONGSBERG