



KONGSBERG

***Kongsberg cNODE
Maxi and Midi, Medium Frequency
Instruction Manual***

322217/H

March 2021 © Kongsberg Maritime AS

Document information

- **Product:** Kongsberg cNODE
- **Document:** Instruction Manual
- **Document part number:** 322217
- **Revision:** H
- **Date of issue:** 19 March 2021

Copyright

The information contained in this document remains the sole property of Kongsberg Maritime AS. No part of this document may be copied or reproduced in any form or by any means, and the information contained within it is not to be communicated to a third party, without the prior written consent of Kongsberg Maritime AS.

Warning

The equipment to which this manual applies must only be used for the purpose for which it was designed. Improper use or maintenance may cause damage to the equipment and/or injury to personnel. You must be familiar with the contents of the appropriate manuals before attempting to operate or work on the equipment.

Kongsberg Maritime disclaims any responsibility for damage or injury caused by improper installation, use or maintenance of the equipment.

Disclaimer

Kongsberg Maritime AS endeavours to ensure that all information in this document is correct and fairly stated, but does not accept liability for any errors or omissions.

Support information

If you require maintenance or repair, contact Kongsberg Maritime's support organisation. You can also contact us using the following address: km.support.hpr@kongsberg.com. If you need information about our other products, visit <https://www.kongsberg.com/maritime>.

Table of contents

IMPORTANT — BATTERY SAFETY	7
ABOUT THIS MANUAL	8
KONGSBERG CNODE	9
System description	10
Naming description	10
Scope of supply	11
General supply conditions.....	12
Receipt, unpacking and storage.....	12
Equipment responsibility.....	12
Support information	13
SYSTEM UNITS	14
Transducers	15
Remote transducers.....	15
Modular top section (MTS)	16
Modular end caps (MEC).....	17
cNODE batteries	19
External sensors	19
Accessories	19
CABLE LAYOUT AND INTERCONNECTIONS.....	21
External signal connector pinout	22
Sensor interface connector pinout.....	23
Inclinometer connector pinout	24
Sensor interface, Pressure and Inclination connector pinout.....	25
Pressure and Inclination external power connector pinout.....	26
MGC R3 connector pinout.....	26
Modem end cap interface connector pinout.....	28
Modem top section interface connector pinout.....	29
Jumper settings Modem	29
GENERAL ACOUSTIC CONSIDERATIONS	31
GETTING STARTED	33
Turning on the transponder	34
Turning off the transponder	35
Pre-deployment checks	35
Changing between responder and transponder mode	36
Installing a differential inclinometer.....	37
Installing a sea current meter	37

Installing a transponder with an MGC end cap	39
Installing a floating collar	39
Deploying a transponder with a floating collar	40
Releasing the transponder manually	41
Closing the release unit	41
Adding weight to the release unit	42
Default transmit power	43
Extending the battery lifetime	43
EMERGENCY PROCEDURES	44
Safety features	45
Recovering a failing transponder	45
Opening a transponder with defect/possibly defect battery	46
Handling a heated or self-heated transponder	46
Handling a transponder with an open relief valve	47
Handling heated or warm batteries	47
Handling transponder and separate transponder batteries in case of an external fire	48
OPERATING PROCEDURES	49
MAINTENANCE	50
Recovering the transponder	51
Battery storage	51
Cleaning the transponder	52
Opening the transponder	52
Replacing the O-rings	53
Changing the battery	53
Replacing the sacrificial anodes	55
Resetting the pressure relief valve	55
Lubricating SubConn® connectors	55
Closing the release unit	56
Releasing the transponder manually	56
SPARE PARTS	58
Ordering spare parts	59
Maintenance kit	59
Transducers	60
TD180 Spare part	60
TD30V30H Spare part	60
TD30V Spare part	60
Split for remote transducer Spare part	60
TDR180 Spare part	61
TDR30H Spare part	61

TDR30V Spare part.....	61
TDR40V Spare part.....	61
Transducer cable Spare part	61
Modular top section	62
Sound velocity, Pressure, Inclinometer top section Spare part	62
Modem top section Spare part.....	62
End caps	62
Basic end cap Spare part	62
Release end cap Spare part.....	62
Sensor interface end cap Spare part	63
MGC end cap Spare part	63
Inclinometer end cap Spare part.....	63
Differential Inclinometer end cap Spare part	63
Pressure, Inclinometer end cap Spare part	63
Modem end cap Spare part.....	63
cNODE Maxi Battery Spare part.....	64
cNODE Midi Battery Spare part.....	64
External inclinometer Spare part	64
Inclinometer sensor Interface cable Spare part.....	64
Adapter for floating collar Spare part	64
Floating collar Spare part.....	65
Transport plug Spare part.....	65
TTC 30 (Transponder Test and Configuration unit) Spare part	65
Current meter Aquadopp Spare part	65
Aquadopp mounting clamp Spare part	65
Transponder rack Spare part	66
Funnel collar Spare part.....	66
ABOUT DRAWINGS	67
Differential inclinometer arrangement drawing.....	68
Current meter arrangement drawing	69
TECHNICAL SPECIFICATIONS.....	70
Performance specifications	71
Weights and outline dimensions	74
Power requirements	78
Environmental requirements.....	82
BATTERY SAFETY.....	83
SECTION 1: Identification.....	84
SECTION 2: Hazards identification	84
SECTION 3: Composition	85
SECTION 4: First aid measures	86

SECTION 5: Firefighting measures	86
SECTION 6: Accidental release measures	87
SECTION 7: Handling and storage	87
SECTION 8: Exposure control and personal protection	88
SECTION 9: Physical and chemical properties	88
SECTION 10: Stability and reactivity	89
SECTION 11: Toxicological information	89
SECTION 12: Ecological information	89
SECTION 13: Disposal considerations	90
SECTION 14: Transport information	90
SECTION 15: Regulatory information	91
SECTION 16: Other information	91

Important — Battery safety

Read the lithium batteries safety procedure before handling batteries.

WARNING

The transponders are equipped with lithium batteries which can potentially be dangerous.

Read the lithium batteries safety procedure before handling batteries.

About this manual

The purpose of this manual is to provide the descriptions, procedures and detailed parameter explanations required to allow for safe and efficient use of the cNODE.

Target audience

This manual is intended for all users of the cNODE system.

Online information

All end-user manuals provided for operation and installation of your cNODE system can be downloaded from our website.

<https://www.kongsberg.com/maritime>

Registered trademarks

Observe the registered trademarks that apply.

Windows® is a registered trademark of Microsoft Corporation in the United States and other countries.

HiPAP® is a registered trademark of Kongsberg Maritime AS in Norway and other countries.

cNODE® is a registered trademark of Kongsberg Maritime AS in Norway and other countries.

cPAP® is a registered trademark of Kongsberg Maritime AS in Norway and other countries.

Kongsberg cNODE

Topics

[System description, page 10](#)

[Naming description, page 10](#)

[Scope of supply, page 11](#)

[General supply conditions, page 12](#)

[Support information, page 13](#)

System description

cNODE is a family of transponders for underwater positioning and data links, and operates with HiPAP and cPAP transceivers. cNODE is designed to be a very versatile system with many interchangeable parts.

The transponders are operated from Acoustic Position Operator Station (APOS) with an acoustic telemetry link for command and data transfer. cNODE is compatible with both Cymbal protocol for positioning and data link and FSK channels and telemetry. They have responder and transponder functionality, SSBL and LBL positioning, and telemetry capabilities.



The transponders are rated to 6000 metres, depending on housing. The transponders are designed with a modular construction which means that the transducer, transponder electronics, battery pack and optional add-on's can be replaced individually to suit the operation.

The transponder may be secured to a subsea structure using mounting brackets, or fitted with an anchor weight and floating collar for operation on the open seabed.

Naming description

The transponder name consists of the model name, the model number, the transducer beam width and any options included.

Model name

cNODE Maxi

cNODE Midi

Model number

First digit = Frequency band	Second digit = Depth rating
3 = 30 kHz	4 = 4000 m, 6 = 6000 m

Transducer beamwidth

180 = 180° beam width

30V30H = 30° vertical and 30° horizontal beam width

30V = 30° vertical beam width

Optional transponder modules

R: Release mechanism

I: Inclinometer sensor

II: Differential inclinometer sensor

Si: Sensor interface

SiPI: Sensor interface, Pressure and Inclinometer

SvPI: Sound velocity, Pressure and Inclinometer

PI: Pressure and Inclinometer

MGC: Motion Gyro Compass

Mi: Modem

Transponder identification

The transponders have labels that identifies

- the transponder name
- serial number
- default channels

Scope of supply

The main units required are provided with the standard delivery.

- Transponder
- Battery
- Quick Reference Guide

General supply conditions

General supply conditions apply to this cNODE delivery.

Receipt, unpacking and storage

Upon accepting shipment of the equipment, the shipyard and/or the dealer must ensure that the delivery is complete and inspect each shipping container for evidence of physical damage.

If the inspection reveals any indication of crushing, dropping, immersion in water or any other form of damage, the recipient should request that a representative from the company used to transport the equipment be present during unpacking.

All equipment must be inspected for physical damage, i.e. broken controls and indicators, dents, scratches etc. during unpacking. If any damage to the equipment is discovered, the recipient must notify both the transportation company and Kongsberg Maritime so that Kongsberg Maritime can arrange for replacement or repair of the damaged equipment.

Once unpacked, the equipment must be stored in a controlled environment with an atmosphere free of corrosive agents, excessive humidity or temperature extremes.

The equipment must be covered to protect it from dust and other forms of contamination when stored.

Equipment responsibility

Unless otherwise stated in the contract, the shipyard doing the installation and/or equipment dealer becomes fully responsible for the equipment upon receipt.

The duration of responsibility cover:

- The period of time the equipment is stored locally before installation
- The entire installation process
- Commissioning
- The period of time between commissioning and the final acceptance of the equipment by the end user or owner

Unless other arrangements have been made in the contract, the Kongsberg cNODE warranty period (as specified in the contract) begins when the acceptance documents have been signed.

Support information

Should you need technical support for your cNODE system you must contact a Kongsberg Maritime office. A list of all our offices is provided on our website. You can also contact our main support office in Norway.

Manuals and technical information can be downloaded from our support website.

Company name	Kongsberg Maritime AS
Address	Strandpromenaden 50, 3183 Horten, Norway
Telephone	+47 33 03 41 00
Telephone 24h support	+47 33 03 24 07
Telefax	+47 33 04 76 19
Website	https://www.kongsberg.com/maritime/
Support website	Product support A to Z
Email address	km.support.hpr@kongsberg.com

System units

Topics

[Transducers, page 15](#)

[Remote transducers, page 15](#)

[Modular top section \(MTS\), page 16](#)

[Modular end caps \(MEC\), page 17](#)

[cNODE batteries, page 19](#)

[External sensors, page 19](#)

[Accessories, page 19](#)

Transducers

For more information about our transducers, see our website. <https://www.kongsberg.com/maritime>

TD180

The transducer has a 180° omnidirectional beam width.



TD30V30H

The transducer has a 30° vertical and a 30° horizontal beam width.



TD30V

The transducer has a 30° vertical beam width.



Remote transducers

The remote transducers are connected to the top of the transponder with a cable.

TDR180

The transducer has a 180° omnidirectional beam width.



TDR40V

The transducer has a 40° vertical beam width.



TDR30V

The transducer has a 30° vertical beam width.



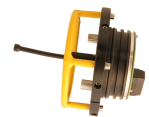
TDR30H

The transducer has a 30° horizontal beam width.



Split for remote transducer

The split is the connection between the transponder and the remote transducer.



Transducer cable

The cable connects the transponder and the remote transducer.



Modular top section (MTS)

Several modules are available for different versions of the top sections.

Sound velocity, Pressure and Inclinator

The SvPI module provides a full suite of precision survey grade sensors for subsea positioning.

It is available in aluminium and steel for different depths and accuracies.



Modem

The modem lets you send data acoustically to and from sensors and other equipment.

The section is available in aluminium.



Modular end caps (MEC)

Several end caps are available for different needs.

Basic end cap

The basic end cap has a vent screw, safety valve, a standard external connector and is available in aluminium and stainless steel.



Release end cap

The release mechanism can also be fitted on a basic end cap. It is available in aluminium and stainless steel.



Sensor interface end cap

The sensor interface module interfaces with external sensors (RS-232/RS-485/RS-422) and is available in aluminium and stainless steel.



Modem

The modem lets you send data acoustically to and from sensors and other equipment. The end cap is available in stainless steel.



Inclinometer end cap

The Inclinometer end cap has one set of inclinometers set at 90° to each other (X and Y) and is available in stainless steel.

It is available as an end cap or in a combination with an external sensor.



Pressure, Inclinometer end cap

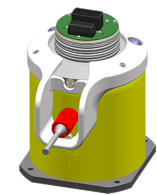
The Pressure and Inclinometer end cap contains an inclinometer measuring the X and Y angle and a pressure sensor. The end cap has a connector for an external battery pack.

It is available in stainless steel.



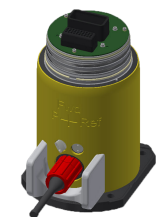
MGC end cap

The Motion Gyro Compass end cap is fitted with a Kongsberg MCG gyro and is available in aluminium for various accuracies.



Sensor interface, Pressure and Inclination end cap

The sensor interface, pressure and inclination end cap holds an internal pressure sensor and inclination sensor units and is available in aluminium.



cNODE batteries

These are non-rechargeable lithium batteries.

cNODE Maxi battery

The battery is made for cNODE Maxi and has a total energy content of 128 Ah.



cNODE Midi battery

The battery is made for cNODE Midi and has a total energy content of 64 Ah.



External sensors

Several sensors are available for different needs.

Inclinometer sensor

The sensor has one set of inclinometers set at 90° to each other (X and Y).

It is available as an end cap or in a combination with an external sensor.



Current meter

Aquadopp is a high accuracy sea current meter. The unit is connected to the sensor interface end cap with a subsea cable.



Accessories

Floating collar

The floating collars are available for several depths and for aluminium and stainless steel transponders.



TTC 30 (Transponder Test and Configuration unit)

The TTC can test all Kongsberg transponder high frequency channels, Cymbal and FSK.



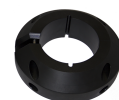
Transponder rack

The rack can be used to fasten the transponder to a riser/structure.



Funnel collar

The funnel holds the transponder into place in a structure. The transponder needs this collar to be held in place in the funnel. The collar has an upper and a lower part.



Aquadopp mounting clamp

The mounting clamp is made for the Aquadopp current meter. It keeps the sensor fastened to the transponder.



Cable layout and interconnections

Topics

[External signal connector pinout, page 22](#)

[Sensor interface connector pinout, page 23](#)

[Inclinometer connector pinout, page 24](#)

[Sensor interface, Pressure and Inclination connector pinout, page 25](#)

[Pressure and Inclination external power connector pinout, page 26](#)

[MGC R3 connector pinout, page 26](#)

[Modem end cap interface connector pinout, page 28](#)

[Modem top section interface connector pinout, page 29](#)

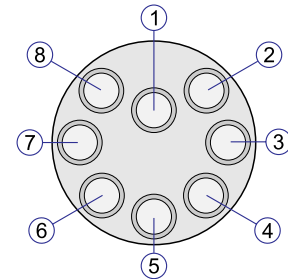
[Jumper settings Modem, page 29](#)

External signal connector pinout

This is the pin configuration for a male plug, as seen towards the plug (face view).

Pin 1, 2 and 3 is for configuration.

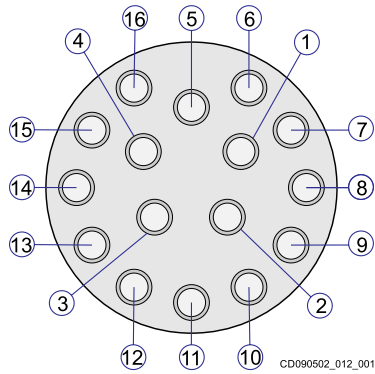
Pin 4 and 5 is for responder function.



Pin number	Signal
1	RS-232 Tx Configuration
2	Ground
3	RS-232 Rx Configuration
4	Responder trigger+
5	Responder trigger-
6	On/Off
7	Not connected
8	Ground

Sensor interface connector pinout

This is the pin configuration for a male plug, as seen towards the plug (face view).

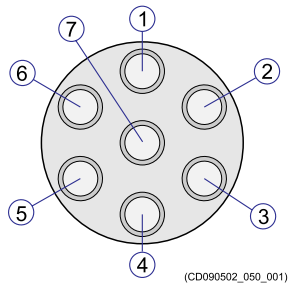


Pin number	Signal
1	RS-232 Tx Sensor interface 1
2	RS-232 Rx Sensor interface 1
3	Ground
4	RS-232 Tx Sensor interface 3
5	RS-232 Rx Sensor interface 3
6	Ground
7	RS-422 Tx +/RS-485 Data +
8	RS-422 Tx -/RS-485 Data -
9	RS-422 Rx +
10	RS-422 Rx -
11	Ground
12	VDC Out 1
13	VDC Out 2
14	Ground
15	On/Off External
16	On/Off Ground

Inclinometer connector pinout

The external differential inclinometer module is connected to the inclinometer module via a cable. Both modules have the same connector and wiring specifications.

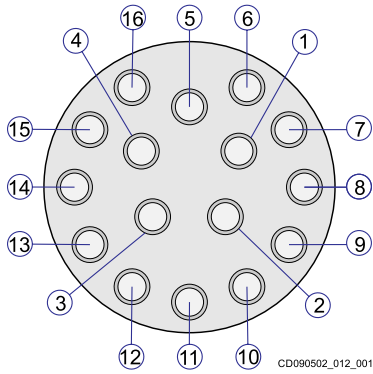
This is the pin configuration for a male plug, as seen towards the plug (face view).



Pin number	Signal
1	Pulse width modulation out
2	Ground
3	X (1)
4	Y (1)
5	X (2)
6	Y (2)
7	VDC Out

Sensor interface, Pressure and Inclination connector pinout

This is the pin configuration for a male plug, as seen towards the plug (face view).

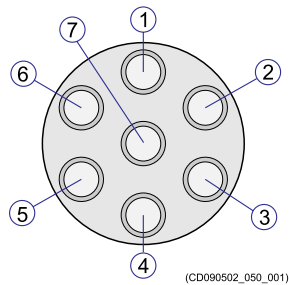


Pin number	Signal
1	RS-422 Tx +
2	RS-422 Tx -
3	RS-422 Rx +
4	RS-422 Rx -
5	RS-232 Tx Sensor interface
6	RS-232 Rx Sensor interface
7	Ground
8	Not connected
9	Not connected
10	Not connected
11	Not connected
12	Not connected
13	VDC Out
14	Ground
15	RS-232 Tx Configuration
16	RS-232 Rx Configuration

Pressure and Inclination external power connector pinout

This is the pinout for the cable to the external battery.

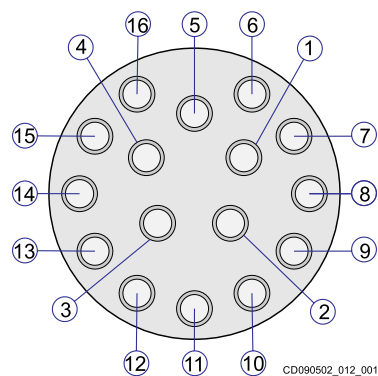
This is the pin configuration for a male plug, as seen towards the plug (face view).



Pin number	Signal
1	
2	Battery +
3	Battery -
4	
5	Ground
6	Battery +
7	ID data

MGC R3 connector pinout

This is the pin configuration for a male plug, as seen towards the plug (face view).



Pin number	Signal
1	Ethernet TD +
2	Ethernet TD -

Pin number	Signal
3	Ethernet RD +
4	Ethernet RD –
5	RS-232 Tx Sensor interface 3
6	RS-232 Rx Sensor interface 3
7	Ground
8	COM2_OUT
9	COM3_IN_A
10	DC Out Ground
11	VDC Out 24V
12	VDC In
13	DC In Ground
14	On/Off
15	RS-232 Tx TP configuration
16	RS-232 Rx TP configuration

Setup

For deck calibration purposes or to use with a ROV display, the EM3000 telegram containing heading, pitch, roll and heave is communicated through the 16 pin Seaconn connector. The data is sent through the RS-232 port COM2_OUT (pin 8 Tx, pin 7 GND). The communications parameters are 9600/8/n/1 with a 10 Hz update rate.

The ON/OFF signal (pin 14 ON/OFF, pin 13 Ext power GND) can be interfaced to a ROV switch to manually turn external power to the MGC on or off by a ROV. External power supply is also turned on by the cNODE transponder when enabling the MGC sensor, but the ROV switch and ROV display output is a backup solution if the transponder is not working.

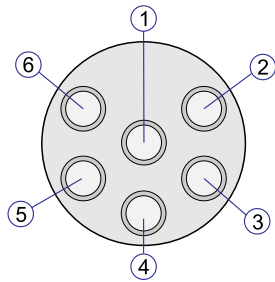
For deck test with internal battery only, the MGC sensor must be activated by using a TTC30 sending an enable sensor command.

For deck calibration without a TTC30 an external 24V supply must be connected to IN_EXT_POWER and the ON/OFF signal must be connected to GND.

Modem end cap interface connector pinout

This is the pinout for a 6-pin end cap.

This is the pin configuration for a male plug, as seen towards the plug (face view).

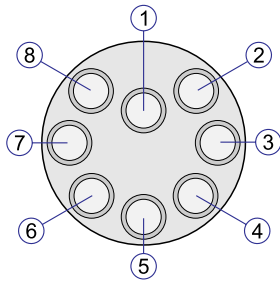


Pin number	Signal
1	RS-422 Tx +/RS-232 Tx
2	RS-422 Tx -
3	RS-422 Rx +/RS-232 Rx
4	RS-422 Rx -
5	Ground
6	Screen

Modem top section interface connector pinout

This is the pinout for an 8-pin top section.

This is the pin configuration for a male plug, as seen towards the plug (face view).



Pin number	Signal
1	RS-232 Tx
2	RS-232 Rx
3	Ground
4	RS-422 Tx +/RS-485 Data +
5	RS-422 Tx -/RS-485 Data -
6	RS-422 Rx +
7	RS-422 Rx -
8	Ground

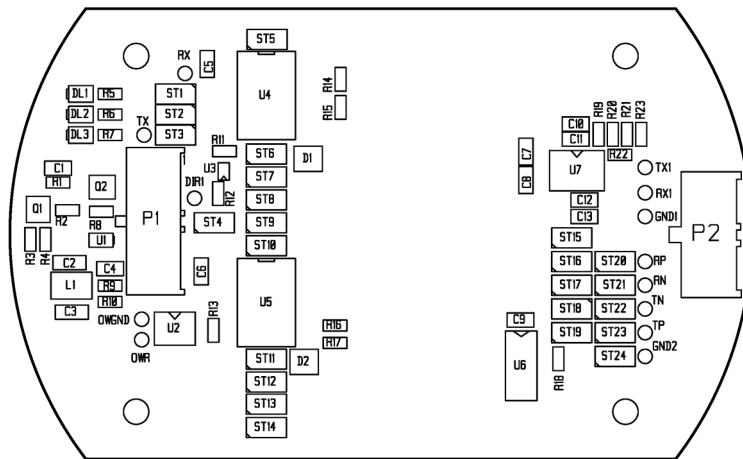
Jumper settings Modem

Default jumper setting is for RS-232 and it is possible to change this to RS-422 or RS-485.

ON indicates that a jumper is inserted, all the others are open.

Jumper number	RS-232	RS-422	RS-485
ST1		ON	ON
ST2	ON		
ST3			
ST4		ON	ON
ST5	ON		
ST6	ON		
ST7	ON		

Jumper number	RS-232	RS-422	RS-485
ST8	ON		
ST9			
ST10		ON	ON
ST11		ON	ON
ST12		ON	ON
ST13		ON	ON
ST14		ON	ON
ST15	ON		
ST16			
ST17			
ST18			ON
ST19			ON
ST20		ON	ON
ST21		ON	ON
ST22		ON	ON
ST23		ON	ON
ST24		ON	ON



General acoustic considerations

Take this information into consideration when deploying the transponders.

Acoustic range

The depth rating should not be confused with acoustic range. The acoustic range is dependent on many factors, and some of the factors are outside control of the user.

Vessel system

The directivity and coverage area for the vessel system is different, depending on which system you are using. Some systems have high directivity and omnidirectional coverage, while other systems has reduced coverage and less directivity. The transponder should always be within the coverage cone of the vessel system.

Transducer type

There are different types of transducers used on the transponders. A focused signal gives less footprint/coverage. The vessel should always be within the signal footprint of the transponder.

Tx Power

The ability to detect signals depends on the signal strength. The transmission power can be adjusted, both for the vessel system and for the transponder.

Acoustic noise

Acoustic noise is present at all vessels. At given conditions, the noise level can be excessive. Acoustic noise is caused by main propellers and thrusters, and in some instances also from machinery and/or pumps on board. Heavy propeller/thruster use or also waves can also generate air bubbles, which can get in front of the vessel transducer and block the acoustic signal.

Sound velocity and ray bending

Changes in sound velocity through the water column caused by changes in the water temperature and/or salinity can bend the acoustic signal and make it impossible to reach the vessel.

Getting started

Topics

[Turning on the transponder, page 34](#)

[Turning off the transponder, page 35](#)

[Pre-deployment checks, page 35](#)

[Changing between responder and transponder mode, page 36](#)

[Installing a differential inclinometer, page 37](#)

[Installing a sea current meter, page 37](#)

[Installing a transponder with an MGC end cap, page 39](#)

[Installing a floating collar, page 39](#)

[Deploying a transponder with a floating collar, page 40](#)

[Releasing the transponder manually, page 41](#)

[Closing the release unit, page 41](#)

[Adding weight to the release unit, page 42](#)

[Default transmit power, page 43](#)

[Extending the battery lifetime, page 43](#)

Turning on the transponder

The transponder is designed for operation in water only. The transponder may be operated in air for test purposes over a short period of time.

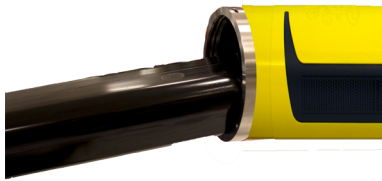
Context

For safety reasons, the transponder is delivered with the battery separately. The battery must be inserted and connected before the transponder is deployed.

Procedure

- 1 Pull out the plastic locking cord that secures the transducer in place.
- 2 Remove the transducer.
- 3 Remove the transport plug.
- 4 Insert the new battery.

Inserting the battery at an angle makes this easier. Press firmly to make sure the battery is properly inserted.



- 5 Place a bag of dry silica-gel desiccant on the top of the battery.
- 6 Switch the on/off switch inside the top to on.



- 7 Replace the top.
Make sure the alignment marks meet.
- 8 Insert the locking cord by pushing it sideways around the body.

Turning off the transponder

This will leave you with the transponder turned off and not using up the battery.

Prerequisites

WARNING

Remove the battery when storing the transponder for a longer period (months).

Procedure

- 1 Pull out the plastic locking cord that secures the transducer in place.
- 2 Remove the transducer.
- 3 Remove the battery.
- 4 Switch the on/off switch inside the top to off.



- 5 Replace the top.
- 6 Insert the locking cord by pushing it sideways around the body.

Pre-deployment checks

Before deploying the transponder, it is important to do the following checks to make sure the operation goes smoothly.

Prerequisites

Before deploying the transponder, it is important to do the following checks to make sure the operation goes smoothly.

Procedure

- 1 Record the transponder serial number and channels.
- 2 Make sure the vent screw is closed.

- 3 Press the pressure relief valve in, to confirm it is flush with the end cap.
- 4 Check the following if a floating collar is used with the transponder:
 - a Make sure the transponder is properly attached to the floating collar.
 - b Make sure the weight is properly attached to the release.
- 5 Perform an acoustic test using a Transponder Test and Configuration (TTC) unit:
 - a Interrogate the transponder.
 - b Read battery status and confirm that it will last for the upcoming operation.
 - c Read the power setting and confirm it is correct for the upcoming operation.

Changing between responder and transponder mode

The transponder can also be used as a responder unit.

Prerequisites

The transponder must be charged before use.

By default when the cNODE is turned on it is in transponder mode.

The signal input for the responder function must be between 2 and 6 ms with a positive pulse of 5 to 24 V.

Procedure

- 1 When responder trigger signals are received, the mode is automatically changed to responder.
- 2 Once the responder trigger signals stop, it will take 1 minute before the cNODE changes automatically back to transponder mode.

Installing a differential inclinometer

The transponder must have an inclinometer (I) end cap to be able to connect the external inclinometer sensor.

Prerequisites

Turn on the transponder before installation.

The transponder must have an inclinometer (I) end cap to be able to connect the external inclinometer sensor.

Procedure

- 1 Place the transponder and transponder rack on the floor.
- 2 Mount the transponder in the transponder rack by fastening the clamps around the transponder.
- 3 Secure the clamps with screws and tighten them properly.
- 4 Connect the interface cable to the transponder and the other end to the external inclinometer.

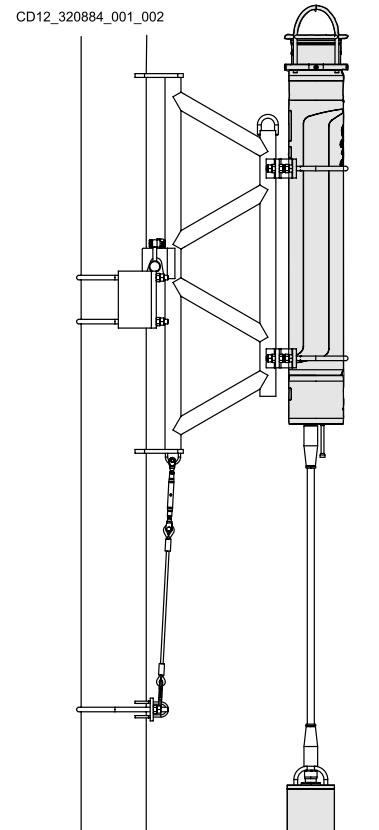
Always apply grease before mating connectors.

SubConn® connectors should not be exposed to extended periods of heat or direct sunlight. If a connector becomes very dry, it should be soaked in fresh water before use.

- 5 Make sure both units face the same direction.

FWD is moulded into the coating of the sensor module on the transponder and it is engraved into the top end cap of the sensor unit.

- 6 Mount the arrangement to the customer's structure.
- 7 Adjust the offset values in APOS to make sure the angles are correct.



Installing a sea current meter

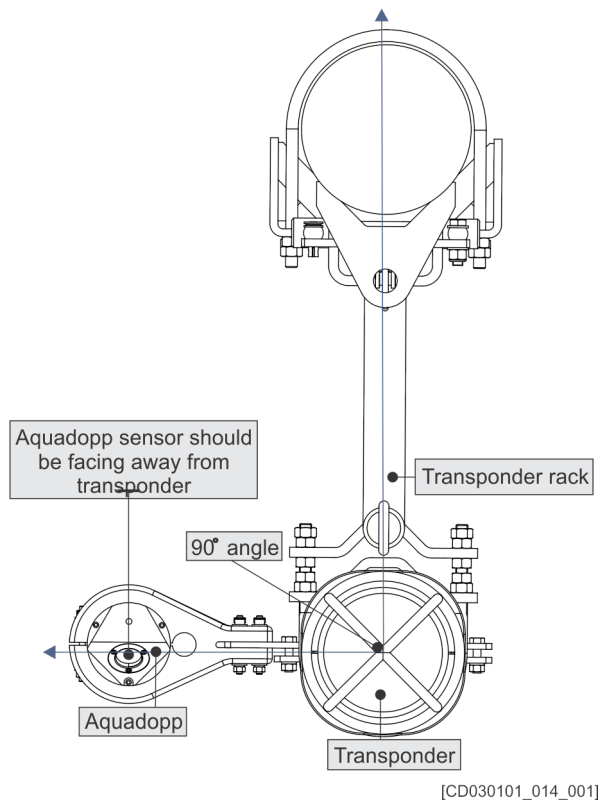
The transponder must have a sensor interface (Si) end cap to be able to connect the external sensor.

Prerequisites

Turn on the transponder before installation.

The transponder must have a sensor interface (Si) end cap to be able to connect the external sensor.

Context



Note

It is very important that the sea current meter's sensor eye faces the current for the best result possible.

Procedure

- 1 Mount the sea current meter sensor brackets on the sensor.
Make sure the angle is correct in relation to the guiding tracks on the sensor.

Note

The sea current meter's sensor eye must be facing away from the transponder and other structures.

- 2 Mount the sensor to the transponder with a mounting clamp.
- 3 Mount the transponder in the transponder rack by fastening the clamps around the transponder.
- 4 Connect the cable to the unit.
Always apply grease before mating connectors.

SubConn® connectors should not be exposed to extended periods of heat or direct sunlight. If a connector becomes very dry, it should be soaked in fresh water before use.

- 5 Mount the arrangement to the customer's structure.

Installing a transponder with an MGC end cap

Four insulation sleeves are delivered with the module.

Prerequisites

For safety reasons, the transponder is delivered with the battery separately. The battery must be inserted and connected before the transponder is deployed.

You need 4 M8 bolts with a fitting length and strength to install the MGC.

Procedure

- 1 Mount the transponder with the transducer having a free line of sight.
- 2 Enter the insulation sleeves into the bolt holes in the base of the unit.
- 3 Enter M8 bolts of fitting length and strength to the sleeves.
- 4 Fasten the bolts.

Installing a floating collar

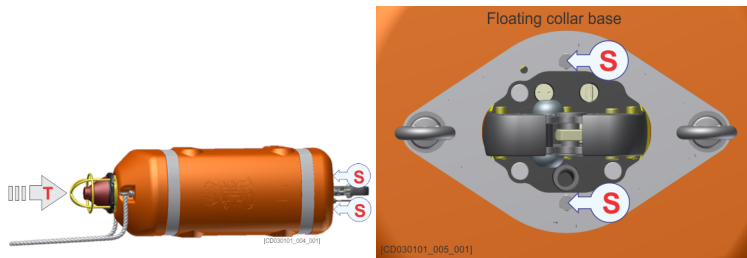
The transponder must have a release unit, or an adapter for a basic end cap, to install a floating collar.

Prerequisites

The transponder must have a release unit, or an adapter for a basic end cap, to install a floating collar.

Procedure

- 1 Remove the two securing screws, **S** on the release unit.
- 2 Insert the transponder **T**, in the floating collar.



- 3 Fasten the two securing screws S on either side of the release unit.
- 4 Make sure the floating collar is fastened securely.

Deploying a transponder with a floating collar

Prerequisites

Install the floating collar before deploying the transponder.

Inspect the rope on the floating collar to make sure it is still intact.

Turn on the transponder before deployment.

Note

Do not lift the transponder by the transponder cage.

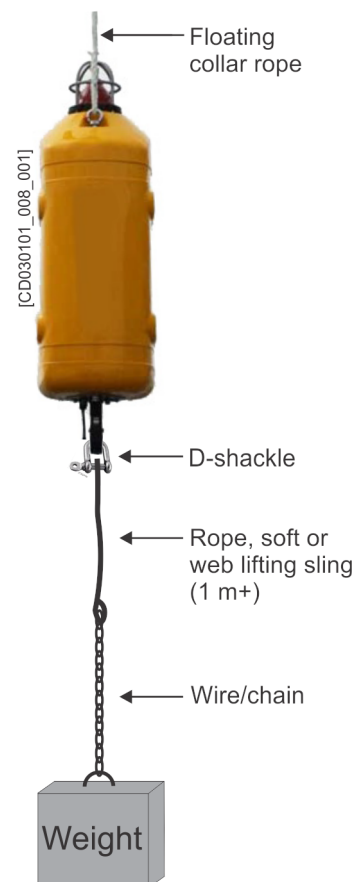
The transponder must be positioned with the transducer upright.

Make sure there is a clear line of sight between the transponder's transducer and the ship's transducer.

The minimum length of the sling between the transponder and the weight should be 2 m to avoid the transponder from hitting the weight when it lands on the seabed.

Procedure

- 1 Connect the lifting device to the rope on the floating collar.
- 2 Lift the transponder with caution to avoid slamming into other solid objects.
- 3 Release the transponder into the water.



Releasing the transponder manually

Normally the unit will be released acoustically from APOS, this procedure is for releasing manually on deck.

Context

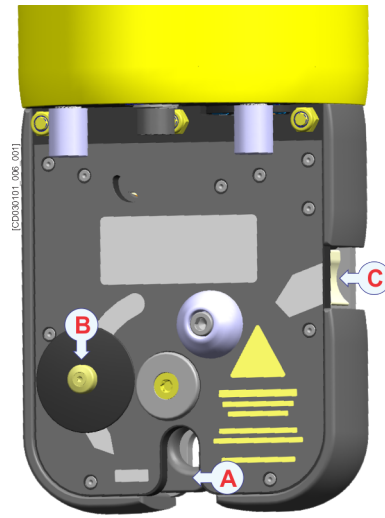
The release unit can be opened manually or acoustically.

Procedure

- Push in the release button **C** on the side of the release unit.
A sudden muted click and thud can be heard and felt.

Result

The release unit is now fully opened **A**.



Closing the release unit

This is how the anchor weight can be attached to the transponder before operation.

Prerequisites

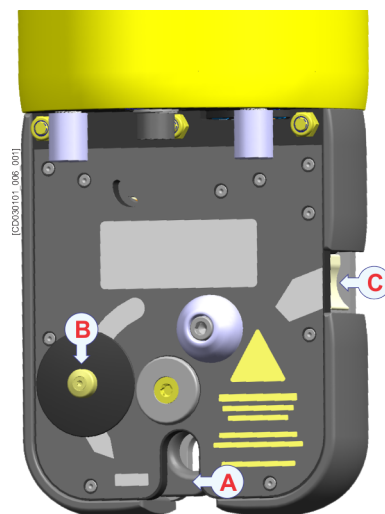
The release unit can be opened manually or acoustically.

Procedure

- 1 Place a release link in the release hook **A**.
- 2 Pull the reset button **B** down until a firm click is heard and felt.

Result

The release unit should now be in a fully closed position.



Adding weight to the release unit

This is how the anchor weight can be attached to the transponder before operation.

Steel shackle

Use a stainless steel D-shackle to connect the rope, soft or web lifting sling to the release mechanism.

Note

Maximum material thickness used in the D-shackle is 15 mm.

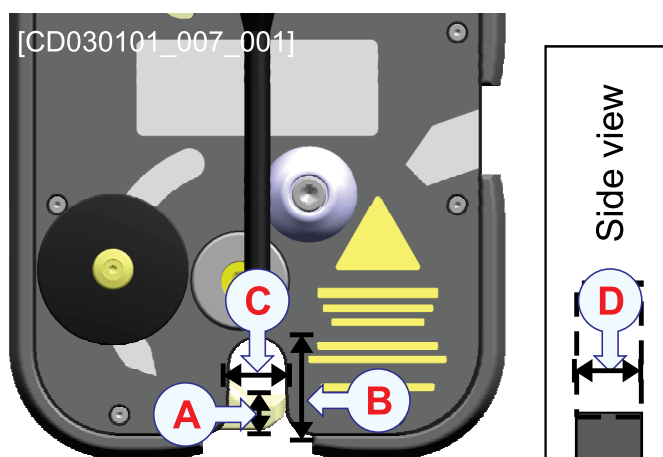
Using rope, soft or web lifting sling directly to the release mechanism might jam the release hook, and the transponder could fail to release/open.

Always use a cable tie or safety wire to secure the pin at the shackle.

- A** 10 mm
- B** 17 mm
- C** 16 mm
- D** 10 mm

It is recommended to use a minimum of 2 m of rope, soft or web lifting sling between the D-shackle attached to the release unit and the weight to avoid corrosion.

Another option is to use a minimum of 1 m of rope, soft or web lifting sling between the D-shackle attached to the release unit and a minimum of 1 m of wire or chain attached to the weight.



Default transmit power

- Cymbal: Low
- Frequency Shift Keying: High

Extending the battery lifetime

Consider how to save the transponder's battery life before deployment.

Reduce the transmit power level of the transponder, or increase the interrogation interval to extend the battery lifetime.

Emergency procedures

Follow these procedures for transponders with lithium batteries with unknown or failing status. Always read these procedures before handling any lithium batteries.

Topics

[Safety features, page 45](#)

[Recovering a failing transponder, page 45](#)

[Opening a transponder with defect/possibly defect battery, page 46](#)

[Handling a heated or self-heated transponder, page 46](#)

[Handling a transponder with an open relief valve, page 47](#)

[Handling heated or warm batteries, page 47](#)

[Handling transponder and separate transponder batteries in case of an external fire, page 48](#)

Safety features

The cNODE has a safety valve for releasing pressure that might build up inside the transponder.

Pressure relief valve

The transponder is fitted with a pressure relief valve at the bottom of the unit. The relief valve prevents overpressure. This valve will release the pressure if it exceeds approximately 1.0 bar.

The relief valve will normally pop out gently releasing the pressure. The valve is reset by firmly pushing the valve back in and is levelled with the surrounding surface.

Resetting the valve can in certain cases be obstructed due to production of acids and salts leaking from a damaged battery. In such cases the battery and circuits may have been damaged. Please contact Kongsberg Maritime for assistance.

Vent screw

The vent screw is normally not operated and is for safety purposes only. The operator can release any excess pressure that may have built up inside the transponder. Make sure to dry off any water around the screw before opening it. The screw is normally opened and closed by hand.

Recovering a failing transponder

Always read the emergency procedures before handling lithium batteries.

Prerequisites

Handle a failing transponder as a possible water ingression.

Procedure

- 1 Evacuate all unnecessary people.
- 2 Recover the transponder with great caution using a crane.
No people should be near the transponder when it is lifted up on deck.
- 3 Place the transponder in a safe place out on deck, shielded from people and vital equipment.
- 4 Fasten the transponder in a crane, ready to lower it into the sea again.
- 5 Control the transponder for minimum two hours.
- 6 Check for damages that could involve a water leakage and check the housing temperature for a possible temperature increase in the lithium battery.

- 7 For batteries with normal temperature: Take out the battery, see the emergency procedure for opening a transponder with a possible defect battery.

[Opening a transponder with defect/possibly defect battery, page 46](#)

- 8 For batteries with increasing temperature: See the emergency procedure for handling a heated or self-heated transponder.

[Handling a heated or self-heated transponder, page 46](#)

Opening a transponder with defect/possibly defect battery

Always read the emergency procedures before handling lithium batteries.

Procedure

- 1 Evacuate all unnecessary people.
- 2 Use a full face mask with minimum BE-filter, and protective equipment made of rubber or plastic.

WARNING

You must never stand in front of, or at the back of the unit, when you open it.

- 3 Open the transponder in a safe place out on the deck, shielded from people and vital equipment.
- 4 If there has been water ingress and the battery is still warm, disconnect the battery from the transponder electronics and study the procedure for handling a heated or warm separate battery.
- 5 Wash out the residues from the chemical reaction with water.

Handling a heated or self-heated transponder

Always read the emergency procedures before handling lithium batteries.

Procedure

- 1 Evacuate all unnecessary people.
- 2 Fasten the transponder to a rope or a crane and immerse in the sea for 24 hours or permanent. If this method is impossible, the unit can be cooled with copious amounts of cold water using a fire hose.
- 3 Recover the transponder and control the temperature.
- 4 Repeat this until the temperature is low and stable.

- 5 Take out the battery, see the emergency procedure for opening a transponder with a possible defect battery.

[Opening a transponder with defect/possibly defect battery, page 46](#)

Handling a transponder with an open relief valve

Always read the emergency procedures before handling lithium batteries.

Procedure

- 1 Evacuate all unnecessary people.
- 2 Use a full face mask with minimum BE-filter, and protective equipment made of rubber or plastic.
- 3 Fasten the transponder to a rope or a crane and immerse in the sea for 24 hours or permanent. If this method is impossible, the unit can be cooled with copious amounts of cold water using a fire hose.
- 4 Repeat this until no gases come out the relief valve and the temperature is low and stable.
- 5 Take out the battery, see the emergency procedure for opening a transponder with a possible defect battery.

[Opening a transponder with defect/possibly defect battery, page 46](#)

- 6 Wash out the residues from the chemical reaction with water.

Handling heated or warm batteries

Always read the emergency procedures before handling lithium batteries.

Procedure

- 1 Evacuate all unnecessary people.
- 2 Fasten the battery to a rope or a crane and immerse in the sea for 24 hours or permanent. If this method is impossible, the unit can be cooled with copious amounts of cold water using a fire hose.
- 3 Wash out the residues from the chemical reaction with water.

Handling transponder and separate transponder batteries in case of an external fire

Always read the emergency procedures before handling lithium batteries.

Procedure

- 1 If possible, move the battery and/or the transponder away from the fire.
- 2 Cool it down using lots of cold water.

Cooling down the battery with a large amount of cold water is the only way to reduce or stop the internal chemical reactions, or to limit the fire/explosions to as few battery cells as possible. The chemical reactions/fire will continue without additional supply of oxygen, so an extinguisher such as Lith-X will not work properly.

Operating procedures

The transponder is operated from the HiPAP operator station APOS.

- Refer to APOS online help for descriptions.

Maintenance

Topics

- [Recovering the transponder, page 51](#)
- [Battery storage, page 51](#)
- [Cleaning the transponder, page 52](#)
- [Opening the transponder, page 52](#)
- [Replacing the O-rings, page 53](#)
- [Changing the battery, page 53](#)
- [Replacing the sacrificial anodes, page 55](#)
- [Resetting the pressure relief valve, page 55](#)
- [Lubricating SubConn® connectors, page 55](#)
- [Closing the release unit, page 56](#)
- [Releasing the transponder manually, page 56](#)

Recovering the transponder

Always read the emergency procedures before handling lithium batteries.

Context

Avoid slamming the transponder against solid objects as it is lifted out of the water.

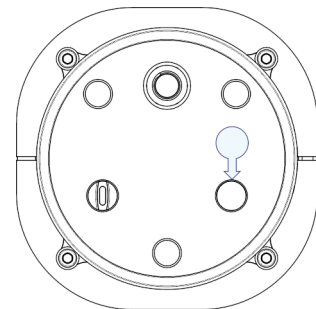
Procedure

- 1 Send an acoustic command to the transponder to release it from the weight, for transponders with a release and a floating collar.
- 2 Grab hold of the rope attached to the floating collar and pull the transponder towards you.
- 3 Avoid slamming the transponder against solid objects as it is lifted out of the water.
- 4 Check the transponder's temperature
If the transducer is overheated go directly to the emergency procedures.
- 5 Check the pressure relief valve to see if any chemical reaction has increased the pressure in the transponder to set it off.
- 6 Control the transponder for minimum two hours.

Check for damages that could involve a water leakage and check the housing temperature for a possible temperature increase in the lithium battery.

For batteries with possible damages, go to the emergency procedures chapter.

- 7 Wash the unit thoroughly in warm fresh water to dissolve any salt deposits and clean off any sand or silt.
- 8 As an extra precaution, it is recommended that the unit is left to soak in fresh water to allow salt to dissolve and diffuse from hard-to-reach areas, such as crevices between mating parts.
Leave the unit to soak for 24 hours, or as long as practical conditions allow.
- 9 Dry off, so no water can come inside when opening.
- 10 Turn the transponder off and store the batteries outside the housing if the transponder is not used for some time.



Battery storage

The batteries may be stored for up to 10 years with little loss of capacity, the losses being approximately according to these figures:

- **1st year:** 3 %

- **Next 9 years:** 1.5 % per year

The total capacity lost over 10 years will therefore be approximately 15%.

Cleaning the transponder

The transponder must be cleaned after use.

Procedure

- 1 Remove any growth and dirt with a stiff brush or a wooden or plastic scraper.
Be careful not to damage the unit.
- 2 Clean the unit thoroughly with lots of fresh water.
- 3 Dry off, so no water can come inside when opening.

Opening the transponder

Always read the emergency procedures before handling lithium batteries.

Prerequisites

WARNING

A battery malfunction may have caused high pressure to build up inside the transponder.

You must never stand in front of, or at the back of the unit, when you open it. Open the transponder in a safe place out on the deck, shielded from people and vital equipment.

Use a full face mask with minimum BE-filter, and protective equipment made of rubber or plastic.

The unit must be cleaned and dried before opening, so that no dirt or water seeps into it when it's opened.

Procedure

- 1 Pull out the locking cord between the tube and either the top end cap, the transducer or the top section module.
If the locking cord is hard to remove, carefully open the vent screw. Pressure may have built up inside the transponder.
- 2 Remove the top section.
- 3 Inspect all O-rings for damage.

- 4 Replace the O-rings that are damaged or used for more than a year.
- 5 Make sure the mating surfaces and the O-rings are completely clean.
- 6 Wipe a thin film of silicone grease over the rings and mating surfaces.

Note

Do not lubricate the electromagnetic interference (EMI) shield (white or greyish ring).

Result

Follow the procedure for opening the transponder in reverse order to close it.

Replacing the O-rings

If the O-rings have dents, nicks or other damages, you must replace them.

Prerequisites**Note**

The O-rings must be clean, in good condition and free of cuts or other defects which could affect their watertight integrity.

Procedure

- 1 Open the unit.
- 2 Remove the damaged O-ring.
- 3 Clean the surface.
- 4 Fit the O-ring carefully in place.
Never use a screwdriver or any other sharp tool as this may easily damage the O-ring.
- 5 Apply a thin film of silicon grease on the O-ring.
- 6 Close the unit.

Changing the battery

Always read the emergency procedures before handling lithium batteries.

Prerequisites

The transponder must be open to change the battery.

Note

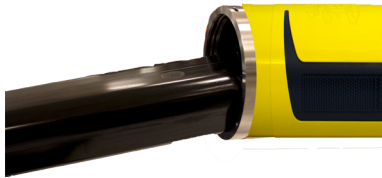
Read the lithium batteries safety procedure before handling batteries.

Do not connect the + and – electrodes on the batteries with metal or wire..

Procedure

- 1 Pull out the plastic locking cord that secures the transducer in place.
- 2 Remove the transducer.
- 3 Remove the spent battery.
- 4 Insert the new battery.

Inserting the battery at an angle makes this easier. Press firmly to make sure the battery is properly inserted.



- 5 Place a bag of dry silica-gel desiccant on the top of the battery.
- 6 Switch the on/off switch inside the top to on.



- 7 Replace the top.
Make sure the alignment marks meet.
- 8 Insert the locking cord by pushing it sideways around the body.

Result

A buzz can be heard within 25 seconds as a confirmation that the transponder is activated.

Replacing the sacrificial anodes

Sacrificial anodes are slowly disintegrating during normal wear and tear. They must be replaced when spent.

Context

Inspect the anodes regularly, and replace them if needed.

Procedure

- 1 Unscrew the corroded anodes using pliers.
Make sure the centre stud bolt comes out.
- 2 Replace the anode and the serrated washer for better contact.

Resetting the pressure relief valve

The Pressure relief valve can be found on the transponder bottom end cap.

Procedure

- 1 Clean the unit thoroughly with lots of fresh water.
- 2 Push the valve back in until it sits flush with the surrounding surface.
- 3 Contact Kongsberg Maritime for assistance if the valve will not reset properly.

Lubricating SubConn® connectors

Underwater connectors must be kept clean and lubricated and should be inspected regularly for damages and corrosion.

Context

SubConn® connectors should not be exposed to extended periods of heat or direct sunlight. If a connector becomes very dry, it should be soaked in fresh water before use.

See also information from the manufacturer <https://www.macartney.com/what-we-offer/support/subconn-handling-instructions/>

Procedure

- 1 Grease the connector with Molykote 44 Medium or equivalent grease.
A layer of grease corresponding to minimum 1/10 of the socket depth should be applied to the female connector.

- 2 Check that the inner edge of all sockets is completely covered, and a thin transparent layer of grease is visible on the face of the connector.
- 3 Fully mate the male and female connector in order to secure optimal distribution of grease on pins and in sockets.
- 4 Open and check for grease on every male pin, to confirm that enough grease is applied.
Add more if necessary.
- 5 Connect and tighten the locking sleeve.

Closing the release unit

This is how the anchor weight can be attached to the transponder before operation.

Prerequisites

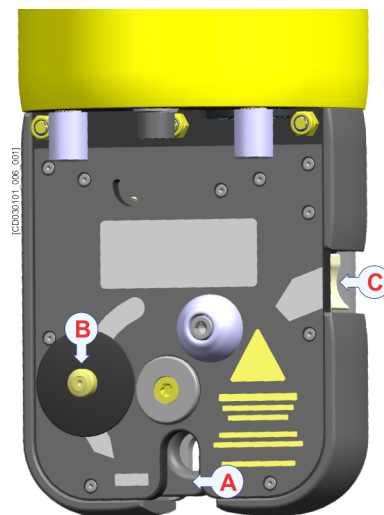
The release unit can be opened manually or acoustically.

Procedure

- 1 Place a release link in the release hook **A**.
- 2 Pull the reset button **B** down until a firm click is heard and felt.

Result

The release unit should now be in a fully closed position.



Releasing the transponder manually

Normally the unit will be released acoustically from APOS, this procedure is for releasing manually on deck.

Context

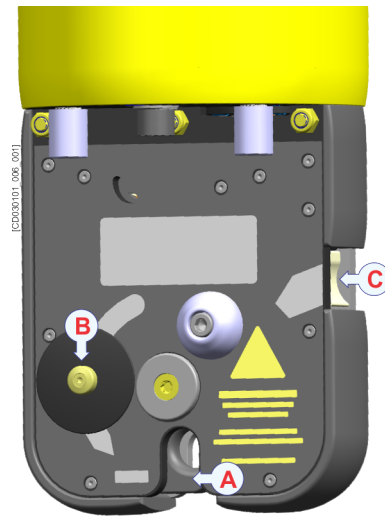
The release unit can be opened manually or acoustically.

Procedure

- Push in the release button C on the side of the release unit.
A sudden muted click and thud can be heard and felt.

Result

The release unit is now fully opened A.



Spare parts

Topics

[Ordering spare parts, page 59](#)

[Maintenance kit, page 59](#)

[Transducers, page 60](#)

[Modular top section, page 62](#)

[End caps, page 62](#)

[cNODE Maxi Battery Spare part, page 64](#)

[cNODE Midi Battery Spare part, page 64](#)

[External inclinometer Spare part, page 64](#)

[Inclinometer sensor Interface cable Spare part, page 64](#)

[Adapter for floating collar Spare part, page 64](#)

[Floating collar Spare part, page 65](#)

[Transport plug Spare part, page 65](#)

[TTC 30 \(Transponder Test and Configuration unit\) Spare part, page 65](#)

[Current meter Aquadopp Spare part, page 65](#)

[Aquadopp mounting clamp Spare part, page 65](#)

[Transponder rack Spare part, page 66](#)

[Funnel collar Spare part, page 66](#)

Ordering spare parts

To make the order process as short and efficient as possible, you must provide accurate information about the product, the part you need, and yourself.

The following information must be provided with your order:

- Part name and/or description
- Our part number
- Number of items required
- Your shipment address
- Preferred shipment method
- Required date of delivery from us

For certain spare parts (typically complete units, printed circuit boards and software) the vessel name is also useful, as this allows us to update our vessel database.

Materials

Aluminium parts are rated down to 4000 metres.

Steel parts are rated down to 6000 metres.

Maintenance kit

- **Part name:** cNODE Maxi and Midi maintenance kit, Aluminium
- **Part number:** 345595

This kit contains:

- 1 EMI shield
- 1 O-ring, 12 x 2 mm
- 3 Zink anodes 207–5000
- 3 locking cords
- 1 UV plug, dummy
- 6 O-rings, 107 x 5 mm
- 1 O-rings, 10 x 2 mm
- 1 Vent screw
- 1 Locking sleeve
- 1 Transport plug
- 6 Serrated lock washers

Transducers

TD180 Spare part

- **Part name:** TD180 Aluminium
- **Part number:** 319750
- **Part name:** TD180 Steel
- **Part number:** 320877



TD30V30H Spare part

- **Part name:** TD30V30H Aluminium
- **Part number:** 313455
- **Part name:** TD30V30H Steel
- **Part number:** 359429



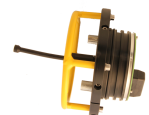
TD30V Spare part

- **Part name:** TD180 Aluminium
- **Part number:** 320662
- **Part name:** TD180 Steel
- **Part number:** 320077



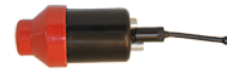
Split for remote transducer Spare part

- **Part name:** Split for remote transducer Aluminium
- **Part number:** 320949
- **Part name:** Split for remote transducer Steel
- **Part number:** 322375



TDR180 Spare part

- **Part name:** TDR180 Aluminium
- **Part number:** 349742
- **Part name:** TDR180 Steel
- **Part number:** 375361



TDR30H Spare part

- **Part name:** TDR30H Aluminium
- **Part number:** 345773
- **Part name:** TDR30H Steel
- **Part number:** 375359



TDR30V Spare part

- **Part name:** TDR30V Aluminium
- **Part number:** 333445
- **Part name:** TDR30V Steel
- **Part number:** 370447



TDR40V Spare part

- **Part name:** TDR40V Aluminium
- **Part number:** 349743
- **Part name:** TDR40V Steel
- **Part number:** 375360



Transducer cable Spare part

- **Part name:** Transducer cable 6 m
- **Part number:** 345772



Modular top section

Sound velocity, Pressure, Inclinator top section Spare part

Many modules are available with different materials, sensors and combination of sensors.

- **Part name:** Sound velocity, Pressure, Inclinator top section, (4000 m)
- **Part number:** 388700



Modem top section Spare part

- **Part name:** Modem top section
- **Part number:** 435530

End caps

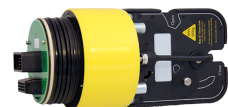
Basic end cap Spare part

- **Part name:** Basic end cap Aluminium
- **Part number:** 330498
- **Part name:** Basic end cap Steel
- **Part number:** 330805



Release end cap Spare part

- **Part name:** Release end cap Aluminium
- **Part number:** 325026
- **Part name:** Release end cap Steel
- **Part number:** 356511



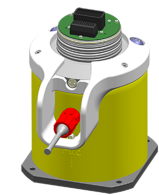
Sensor interface end cap Spare part

- **Part name:** Sensor interface end cap Aluminium
- **Part number:** 347652
- **Part name:** Sensor interface end cap Steel
- **Part number:** 361410



MGC end cap Spare part

- **Part name:** MGC end cap R2
- **Part number:** 397960
- **Part name:** MGC end cap R3
- **Part number:** 435220



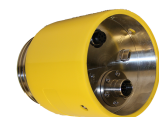
Inclinometer end cap Spare part

- **Part name:** Inclinometer end cap
- **Part number:** 442208



Differential Inclinometer end cap Spare part

- **Part name:** Differential Inclinometer end cap
- **Part number:** 444451



Pressure, Inclinometer end cap Spare part

- **Part name:** Pressure, Inclinometer end cap
- **Part number:** 459701



Modem end cap Spare part

- **Part name:** Modem end cap
- **Part number:** 367549

cNODE Maxi Battery Spare part

- **Part name:** cNODE Maxi Battery
- **Part number:** 319554



cNODE Midi Battery Spare part

- **Part name:** cNODE Midi Battery
- **Part number:** 347563



External inclinometer Spare part

- **Part name:** External inclinometer
- **Part number:** 441115



Inclinometer sensor Interface cable Spare part

- **Part name:** Inclinometer sensor Interface cable
- **Part number:** 322407

Adapter for floating collar Spare part

Adapter for transponder models without a release mechanism. For use on a basic end cap with a floating collar.

- **Part name:** Adapter for floating collar Aluminium
- **Part number:** 369045
- **Part name:** Adapter for floating collar Steel
- **Part number:** 372953



Floating collar Spare part

- **Part name:** Floating collar Aluminium 4000 m
- **Part number:** 319301
- **Part name:** Floating collar Aluminium 2000 m
- **Part number:** 320772
- **Part name:** Floating collar Steel 4000 m
- **Part number:** 331151



Transport plug Spare part

- **Part name:** Transport plug
- **Part number:** 346211



TTC 30 (Transponder Test and Configuration unit) Spare part

- **Part name:** TTC 30 (Transponder Test and Configuration unit)
- **Part number:** 345775



Current meter Aquadopp Spare part

- **Part name:** Aquadopp Current meter
- **Part number:** 349229



Aquadopp mounting clamp Spare part

- **Part name:** Aquadopp mounting clamp
- **Part number:** 351070

Transponder rack Spare part

- **Part name:** Transponder rack
- **Part number:** 320808



Funnel collar Spare part

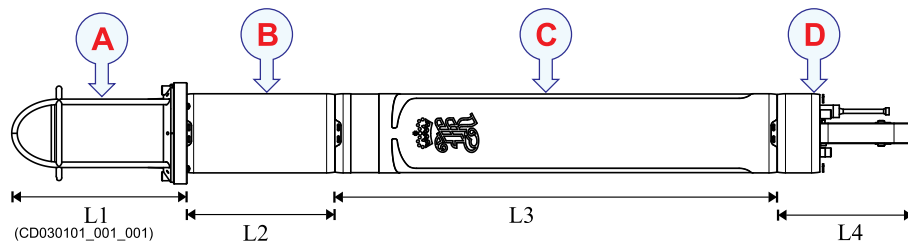
- **Part name:** Funnel collar Upper part
- **Part number:** 383679

- **Part name:** Funnel collar Lower part
- **Part number:** 383683



About drawings

The cNODE transponders come in so many different configurations it is not practical to show an outline drawing of all of them.



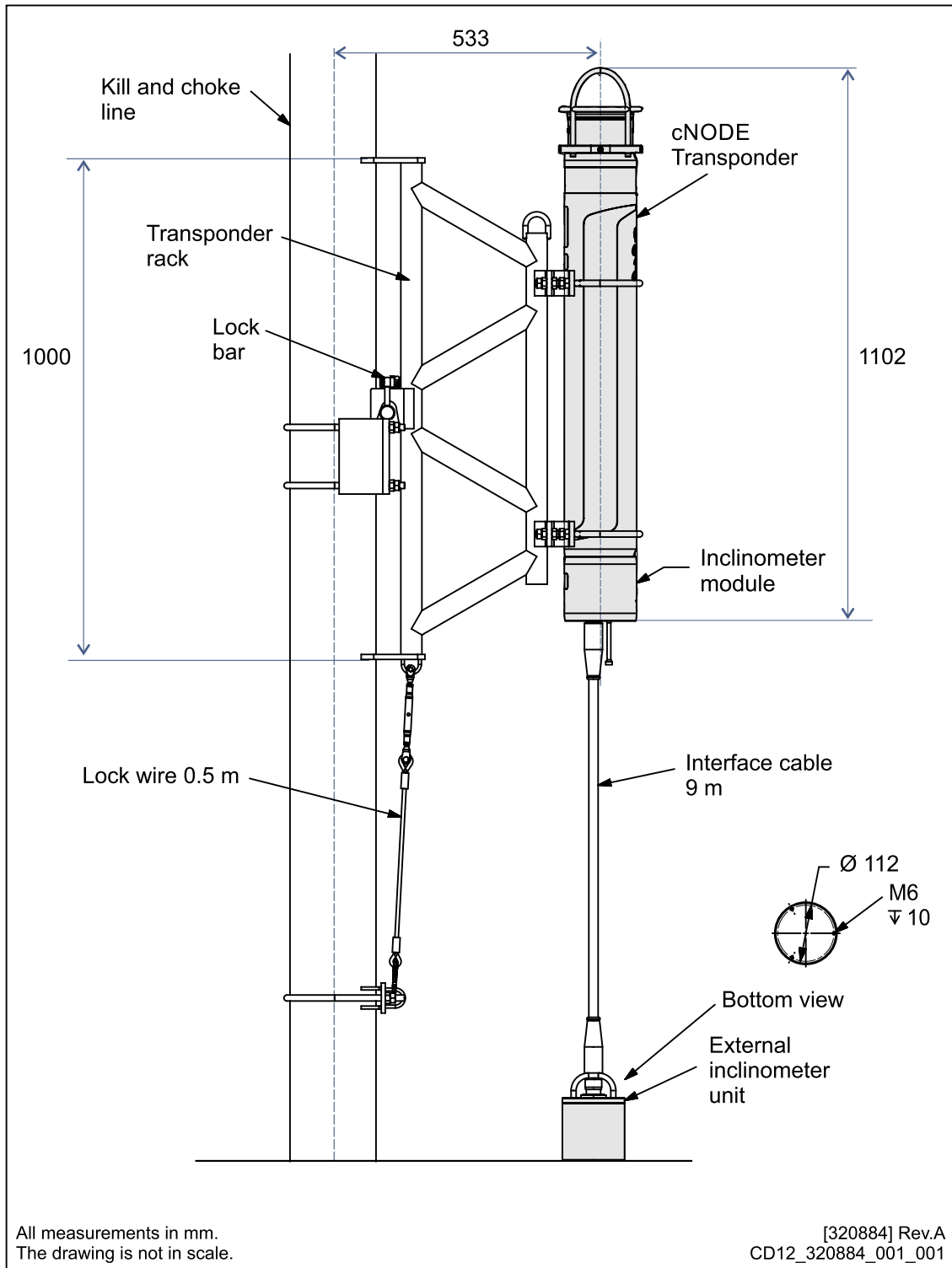
- A** Transducer/Split
- B** Optional transponder modules
- C** Body
- D** End caps

Use the dimensions of the different components in the transponder in the technical specification to find the total dimension of your cNODE transponder.

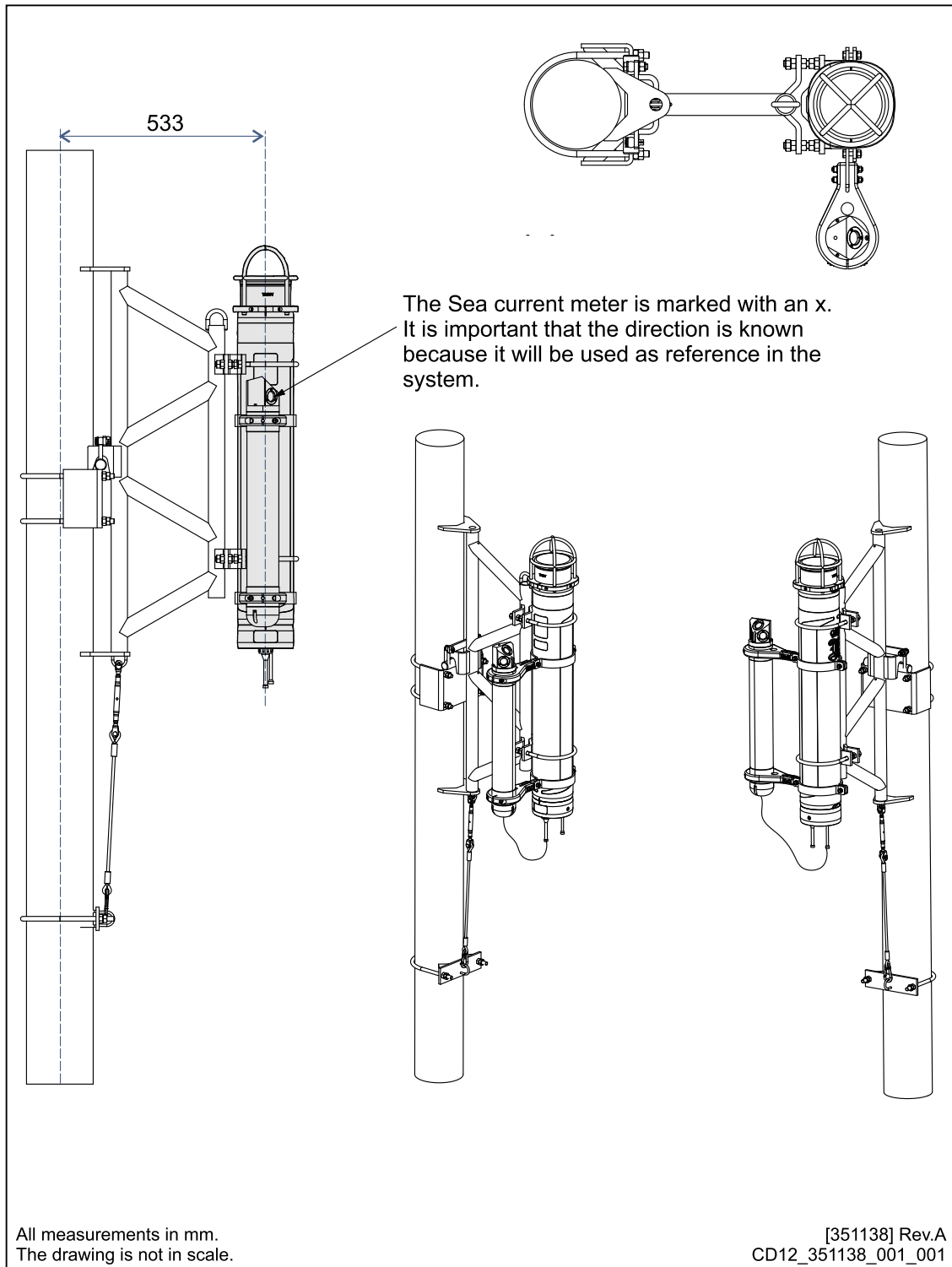
[Weights and outline dimensions, page 74](#)

Contact Kongsberg Maritime if you need an outline drawing of your specific transponder.

Differential inclinometer arrangement drawing



Current meter arrangement drawing



Technical specifications

Topics

[Performance specifications, page 71](#)

[Weights and outline dimensions, page 74](#)

[Power requirements, page 78](#)

[Environmental requirements, page 82](#)

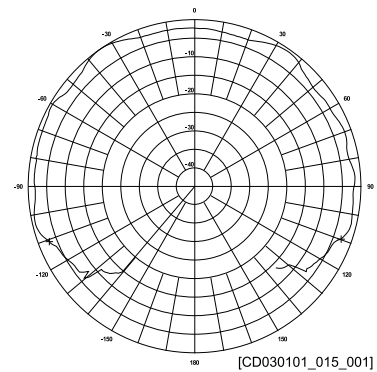
Performance specifications

These performance specifications summarize the main functional and operational characteristics of the system.

- **Depth range:** 4000 m
- **Operating frequency:** Medium frequency 21 – 31 kHz

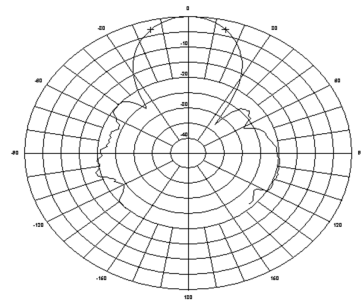
TD180

- **Transducer beam:** 180 degrees
- **Maximum source level:** 190 dB
- **Receiver sensitivity:** 100 dB



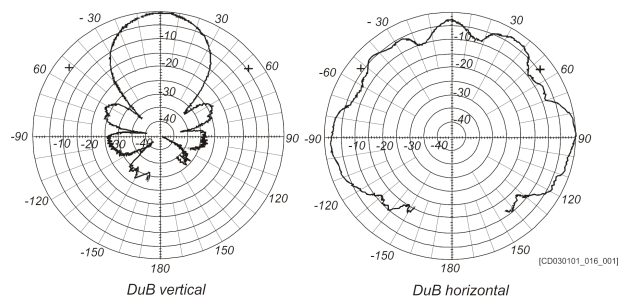
TD30V

- **Transducer beam:** 30° Vertical
- **Maximum source level:** 206 dB
- **Receiver sensitivity:** 85 dB



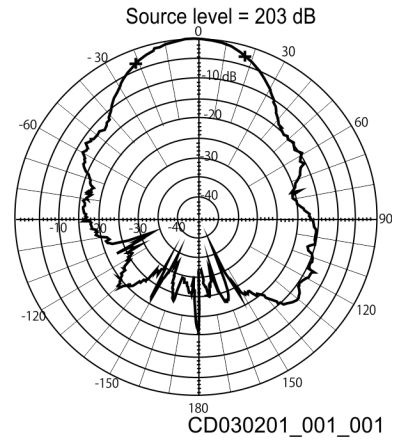
TD30V30H

- **Transducer beam:** 30° Vertical/30° Horizontal
- **Maximum source level:** 206 dB/190 dB
- **Receiver sensitivity:** 85 dB



TDR40V

- **Transducer beam:** 40° Vertical
- **Maximum source level:** 203 dB
- **Receiver sensitivity:** 90 dB



Source level	Maximum	High	Low	Minimum
34–180 series	190 dB	184 dB	178 dB	173 dB
34–30V30H series Vertical	206 dB	200 dB	194 dB	186 dB
34–30V30H series Horizontal	190 dB	184 dB	178 dB	173 dB
34–30V series	206 dB	200 dB	194 dB	186 dB
34–40V series	203 dB	197 dB	191 dB	185 dB
34–30H series	194 dB	188 dB	182 dB	176 dB

Release end cap

- **Safe working load:** 500 kg
- **Minimum anchor weight:** 60 kg
- **Connector:** 8–pin female Subconn MCBH8F for configuration

Sensor interface end cap

- **Connector:** 8–pin female Subconn MCBH8F for configuration
- **Connector:** 16–pin Subconn MCBH16M for sensors

Inclinometer end cap

- **Maximum detectable angles:** ±30 degrees
Accuracy: 0.03 degrees
- **Connector:** 8–pin female Subconn MCBH8F for configuration

Pressure, Inclinometer end cap

Digiquartz pressure sensor

- **1000 m:** ± 0.05 % of full scale range

Inclinometer

- **Accuracy:** ± 0.05 degrees
- **Range:** ± 30 degrees

External inclinometer

- **Maximum detectable angles:** ± 30 degrees
Accuracy: 0.03 degrees
- **Connector:** 8-pin female Subconn MCBH8F for configuration
- **Connector:** 7-pin Gisma plug 10.00.2.07.1.10X for external inclinometer
- **Cable:** Maximum 9 m

Sound velocity, Pressure, Inclinometer top section

Digiquartz pressure sensor

- **1400 m:** ± 0.01 % of full scale range
- **2000 m:** ± 0.01 % of full scale range
- **4000 m:** ± 0.01 % of full scale range

Inclinometer

- **Accuracy:** ± 0.05 degrees
- **Range:** ± 90 degrees

Sound Velocity

- **Accuracy:** ± 0.02 m/s

Floating collar

- **Depth range Aluminium:** 2000 m, 4000 m
- **Depth range Steel:** 4000 m, 7000 m

Weights and outline dimensions

These weights and outline dimension characteristics summarize the physical properties of the system.

TD180

- **Outline dimensions:**
 - **Height:** 169.5 mm
 - **Diameter:** 166 mm
- **Weight (In air) Aluminium:** 4.1 kg
- **Weight (In air) Steel:** 8.2 kg

TD30V30H

- **Outline dimensions:**
 - **Height:** 316 mm
 - **Diameter:** 184 mm
- **Weight (In air) Aluminium:** 8.3 kg
- **Weight (In air) Steel:** 12.9 kg

TD30V

- **Outline dimensions:**
 - **Height:** 169.5 mm
 - **Diameter:** 166 mm
- **Weight (In air) Steel:** 9.1 kg

Split for remote transducer

- **Outline dimensions:**
 - **Height:** 62 mm
 - **Diameter:** 166 mm

TDR180

- **Outline dimensions**
 - **Height:** 209.8 mm
 - **Diameter:** 88 mm

TDR30H

- **Outline dimensions**
 - **Height:** 262.4 mm
 - **Diameter:** 77 mm

TDR40V

- **Outline dimensions**
 - **Height:** 218.6 mm
 - **Diameter:** 100 mm

TDR30V

- **Outline dimensions**
 - **Height:** 279.5 mm
 - **Diameter:** 166 mm

Transducer cable

- **Length:** 6 m

Sound velocity, Pressure and Inclinator (External)

- **Outline dimensions:**
 - **Height:** 184 mm
 - **Diameter:** 144 mm
- **Weight (In air) :** 4.6 kg
- **Weight(In water):** 2 kg

cNODE Maxi body

- **Outline dimensions:**
 - **Height:** 805 mm
 - **Diameter:** 144 mm

cNODE Midi body

- **Outline dimensions:**
 - **Height:** 495 mm
 - **Diameter:** 144 mm

Sound velocity, Pressure, Inclinator top section

- **Outline dimensions:**
 - **Height:** 184 mm
 - **Diameter:** 144 mm
- **Weight (In air) Aluminium:** 2.4 kg

Basic end cap

- **Outline dimensions:**
 - **Height:** 40 mm
 - **Diameter:** 144 mm
- **Weight (In air) Aluminium:** 2.2 kg
- **Weight (In air) Steel:** 5 kg

Release end cap

- **Outline dimensions:**
 - **Height:** 243 mm
 - **Diameter:** 144 mm
- **Weight (In air) Aluminium:** 4.9 kg
- **Weight (In air) Steel:** 11.3 kg

Sensor interface end cap

- **Outline dimensions:**
 - **Height:** 72.8 mm
 - **Diameter:** 144 mm
- **Weight (In air) Aluminium:** 2.4 kg

Inclinometer end cap

- **Outline dimensions:**
 - **Height:** 128 mm
 - **Diameter:** 144 mm

Pressure, Inclinator end cap

- **Outline dimensions:**
 - **Height:** 128 mm
 - **Diameter:** 144 mm

MGC end cap

- **Outline dimensions:**
 - **Height:** 237 mm
 - **Diameter:** 212 mm
- **Weight (In air) Aluminium:** 45 kg
- **Weight(In water) Aluminium:** 22 kg

cNODE Maxi Battery

- **Length:** 704 mm
- **Weight (In air) :** 6.5 kg

cNODE Midi Battery

- **Length:** 325.5 mm
- **Weight (In air) :** 3.5 kg

External inclinometer

- **Outline dimensions:**
 - **Height:** 175 mm
 - **Diameter:** 124 mm

cNODE Maxi Floating collar for aluminium transponders down to 2000 m

- **Outline dimensions:**
 - **Height:** 949 mm
 - **Width:** 358 mm
 - **Depth:** 300 mm
- **Weight (In air) :** 43 kg

cNODE Maxi Floating collar for aluminium transponders down to 4000 m

- **Outline dimensions:**
 - **Height:** 948 mm
 - **Width:** 350 mm
 - **Depth:** 455 mm
- **Weight (In air) :** 69.6 kg

cNODE Maxi Floating collar for steel transponders down to 4000 m

- **Outline dimensions:**
 - **Height:** 845.5 mm
 - **Width:** 528 mm
 - **Depth:** 595 mm
- **Weight (In air) :** 110 kg

cNODE Maxi Floating collar for steel transponders down to 7000 m

- **Outline dimensions:**
 - **Height:** 870 mm
 - **Width:** 488 mm
 - **Depth:** 572 mm
- **Weight (In air) :** 98 kg

Power requirements

These power characteristics summarize the supply power requirements for the cNODE transponder.

cNODE Maxi

- **Battery type:** Non-rechargeable lithium battery Li/SOCl₂
- **Operating range:** 10 — 14.4 VDC
- **Battery voltage:** 14.4 VDC
- **Battery capacity:** 128 Ah
- **Cells per battery:** 48

Battery lifetime

The lifetime ranges should be treated as approximations only. Calculations made should allow for standard deviation in battery manufacture.

- **Quiescent battery lifetime:** 913 days

cNODE Maxi 34–180 series — Cymbal

Update rate	1 second	2 s	3 s	4 s	5 s	10 s
TX power level						
Minimum	95 days	101 days	102 days	103 days	104 days	105 days
Low	71 days	85 days	91 days	95 days	97 days	101 days
High	36 days	54 days	65 days	72 days	77 days	89 days
Maximum	10 days	18 days	25 days	32 days	37 days	55 days

cNODE Maxi 34–180 series — FSK

Update rate	1 second	2 s	3 s	4 s	5 s	10 s
TX power level						
Minimum	167 days	172 days	174 days	175 days	175 days	176 days
Low	141 days	157 days	163 days	167 days	169 days	173 days
High	88 days	118 days	133 days	142 days	148 days	161 days
Maximum	30 days	51 days	67 days	80 days	90 days	119 days

cNODE Maxi 34-30V30H and other series — Cymbal

Update rate	1 second	2 s	3 s	4 s	5 s	10 s
TX power level						
Minimum	95 days	101 days	102 days	103 days	104 days	105 days
Low	59 days	76 days	91 days	84 days	92 days	99 days
High	23 days	38 days	65 days	48 days	62 days	78 days
Maximum	6 days	11 days	25 days	16 days	25 days	40 days

cNODE Maxi 34-30V30H and other series — FSK

Update rate	1 second	2 s	3 s	4 s	5 s	10 s
TX power level						
Minimum	167 days	172 days	174 days	175 days	175 days	176 days
Low	125 days	147 days	156 days	161 days	164 days	170 days
High	61 days	91 days	109 days	121 days	129 days	149 days
Maximum	18 days	34 days	46 days	57 days	66 days	96 days

cNODE Midi

- **Battery type:** Non-rechargeable lithium battery Li/SOCl₂
- **Operating range:** 10 — 14.4 VDC
- **Battery voltage:** 14.4 VDC
- **Battery capacity:** 64 Ah
- **Cells per battery:** 24

Battery lifetime

The lifetime ranges should be treated as approximations only. Calculations made should allow for standard deviation in battery manufacture.

- **Quiescent battery lifetime:** 456.5 days

cNODE Midi 34–180 series — Cymbal

Update rate	1 second	2 s	3 s	4 s	5 s	10 s
TX power level						
Minimum	47.5 days	50.5 days	51 days	51.5 days	52 days	52.5 days
Low	35.5 days	42.5 days	45.5 days	47.5 days	48.5 days	50.5 days
High	18 days	27 days	32.5 days	36 days	38.5 days	44.5 days
Maximum	5 days	9 days	12.5 days	16 days	18.5 days	27.5 days

cNODE Midi 34–180 series — FSK

Update rate	1 second	2 s	3 s	4 s	5 s	10 s
TX power level						
Minimum	83.5 days	86 days	87 days	87.5 days	87.5 days	88 days
Low	70.5 days	78.5 days	81.5 days	83.5 days	84.5 days	86.5 days
High	44 days	59 days	66.5 days	71 days	74 days	80.5 days
Maximum	15 days	25.5 days	33.5 days	40 days	45 days	59.5 days

cNODE Midi 34-30V30H and other series — Cymbal

Update rate	1 second	2 s	3 s	4 s	5 s	10 s
TX power level						
Minimum	47.5 days	50.5 days	51 days	51.5 days	52 days	52.5 days
Low	29.5 days	38 days	42 days	44.5 days	46 days	49.5 days
High	11.5 days	19 days	24 days	28 days	31 days	39 days
Maximum	3 days	5.5 days	8 days	10.5 days	12.5 days	20 days

cNODE Midi 34-30V30H and other series — FSK

Update rate	1 second	2 s	3 s	4 s	5 s	10 s
TX power level						
Minimum	83.5 days	86 days	87 days	87.5 days	87.5 days	88 days
Low	62.5 days	73.5 days	78 days	80.5 days	82 days	85 days
High	30.5 days	45.5 days	54.5 days	60.5 days	64.5 days	74.5 days
Maximum	9 days	17 days	23 days	28.5 days	33 days	48 days

MGC end cap

- **External power:** 9 – 36 VDC
- **Power consumption:**
 - Maximum 20 W
 - Typical 12 W
- **cNODE Maxi:** 72 hours
- **cNODE Midi:** 36 hours

Environmental requirements

These environmental specifications summarize the temperature and humidity specifications for the system.

Transponder

- **Operating temperature:** -5 to 55 °C
- **Storage temperature:** -30 to 70 °C

Battery safety

Topics

- SECTION 1: Identification, page 84
- SECTION 2: Hazards identification, page 84
- SECTION 3: Composition, page 85
- SECTION 4: First aid measures, page 86
- SECTION 5: Firefighting measures, page 86
- SECTION 6: Accidental release measures, page 87
- SECTION 7: Handling and storage, page 87
- SECTION 8: Exposure control and personal protection, page 88
- SECTION 9: Physical and chemical properties, page 88
- SECTION 10: Stability and reactivity, page 89
- SECTION 11: Toxicological information, page 89
- SECTION 12: Ecological information, page 89
- SECTION 13: Disposal considerations, page 90
- SECTION 14: Transport information, page 90
- SECTION 15: Regulatory information, page 91
- SECTION 16: Other information, page 91

SECTION 1: Identification

The specification describes the technical parameters for the battery.

The cNODE contains a custom made Li-Ion battery.

- **Battery name:** L14.4 (48) Maxi
- **Part number:** 319554
- **Battery name:** L14.4 (48) Maxi Exd
- **Part number:** 355324
- **Battery name:** L14.4 (24) Midi
- **Part number:** 347563
- **Manufacturer:** Kongsberg Maritime AS
- **Address:** Strandpromenaden 50, 3190 Horten, Norway
- **Telephone:** +47 33 03 24 07 (24 h)
- **Telefax:** +47 33 04 29 87
- **Email address:** km.support.hpr@kongsberg.com
- **Website:** <https://www.kongsberg.com/maritime>

Note

The battery is provided as a solid and sealed unit. It cannot be opened to reveal individual cells.

SECTION 2: Hazards identification

The battery is not provided with any hazards identification. It is not classified as dangerous or hazardous with normal use.

The battery must not be opened or burned. The battery contains dangerous ingredients. Exposure to the ingredients contained within the battery cells could be harmful. The battery cells include a barrier, preventing exposure to the user and environment. The battery cells are not classified as hazardous according to Regulation (EC) No. 1272/2008.

The chemicals in the battery cells are contained in a sealed enclosure. Risk of exposure occurs only if the cell is mechanically, thermally or electrically abused to the point of compromising the enclosure. If this occurs, exposure to the electrolyte solution contained within can occur by inhalation, ingestion, eye contact and skin contact. The electrolyte solution can be corrosive and may cause irritation and burns.

Other hazards

- **Overcharge:** If the cells that form the battery block are overcharged, the results may be a thermal runaway.

- External fire: Internal pressure and thermal runaway may be the consequences if the cells inside the battery are exposed to temperatures above 85 °C.
- Internal short circuit: Internal short circuit in a cell. Destruction of the separator can cause a short circuit between the anode and cathode. Thermal runaway and fire is possible.
- Water ingress: Internal pressure, thermal runaway and chemical reactions may be the consequence.

The transponder is fitted with a pressure relief valve at the bottom of the unit. The relief valve prevents overpressure. Noxious gases and ingredients will then leak out of the transponder until the chemical reactions have stopped. Products generated by the chemical reactions during an emergency may however clog this pressure release valve.

SECTION 3: Composition

The battery is a solid, manufactured article.

A battery pack consists of several individual cells that are electrically connected, both in series and parallel.

The battery packs have different number of cells and power capacity. All transponder batteries include protection against short circuits (circuit breakers) and reverse current (diodes).

The lithium metal cells have the following chemical formula:

Lithium thionyl chloride — Li/SOCl₂

- **Negative electrode:** Lithium
- **Positive electrode:** Carbon
- **Electrolyte:** A solution of lithium tetrachloroaluminate (LiAlCl₄) in thionyl chloride

Battery identification:

- **Battery name:** L14.4 (48)
- **Part number:** 319554
- **Battery weight:** 6.5 kg
- **Lithium weight:** 183 g

In case of hazardous events, the noxious gases are:

- Thionyl chloride (SOCl₂)
- Sulphur dioxide (SO₂)
- Hydrogen sulphide (H₂S)
- Hydrogen chloride (HCl)
- Chlorine (Cl₂)

For additional information about the cells inside the sealed battery pack, see the safety data sheet provided by the cell manufacturer.

- **Manufacturer:** Saft
- **Cell type:** LSH 20
- **Manufacturer's website:** <https://www.saftbatteries.com/>

SECTION 4: First aid measures

The battery will release toxic fumes if burned or exposed to fire.

If subjected to gas from a burning battery, remove the source of contamination or move yourself and any victims to fresh air. Seek medical advice.

- **Inhalation:** The chemicals are lung irritant. Avoid inhaling any vented gases. Remove the victim and yourself from exposure. Rest and keep warm. If breathing is difficult, seek emergency medical attention.
- **Skin contact:** The chemicals are skin irritant. Rinse immediately with copious amount of water and soap for at least 15 minutes. Wipe immediately away excess material with waterless hand cleaner. Remove contaminated clothing and wash it thoroughly before reuse.
- **Eye contact:** The chemicals are eye irritant. Flush immediately with copious amount of clear tepid water for at least 15 minutes.
- **Ingestion:** Exposure to the chemicals may cause tissue damage to throat and gastro/respiratory tract if swallowed. If ingested, rinse mouth and surrounding area with tepid water. Dilute by drinking plenty of water. Seek medical advice.

SECTION 5: Firefighting measures

The transponder is designed to withstand damage to the internal battery pack. Non-flammable materials are used. In case of fire, move the battery away from the fire area if you can do it without compromising your own safety. Extreme mechanical abuse to the battery may result in a ruptured seal and exposure.

- 1 If possible, move the battery and/or the transponder away from the fire.
- 2 Cool it down using lots of cold water.
 - a Immerse the battery and/or the transponder in the sea for minimum 24 hours.
 - b If this method is impossible, it can be cooled down with a fire hose.

Cooling down the battery with a large amount of cold water is the only way to reduce or stop the internal chemical reactions, or to limit the fire/explosions to as few battery cells as possible. The chemical reactions/fire will continue without additional supply of oxygen, so an extinguisher such as Lith-X will not work properly.

Applying water directly onto a battery may develop hydrogen gas, due to the possible electrolysis if the battery terminals are exposed to water. Mixed with air, this gas is very inflammable/explosive. However, if the water cooling takes place on deck or in a storage room with good ventilation, there will never be enough hydrogen gas to exceed the lower explosive limit of hydrogen in air (about 4 %).

Note

In case of an external fire, always remove transponder units and lithium batteries.

SECTION 6: Accidental release measures

During normal operation, accidental release measures are not applicable. Extreme mechanical abuse to the battery may result in a ruptured seal and exposure.

As an immediate precautionary measure, isolate the spill or leak area at least 25 metres (75 feet) in all directions. Keep unauthorized personnel away. Stay upwind, and keep out of low areas. Ventilate closed areas before entering. Wear adequate personal protective equipment.

Prevent material from contaminating soil and from entering sewers or waterways. Stop the leak if safe to do so. Contain the spilled liquid with dry sand or earth. Clean up the spills immediately.

Absorb spilled material with an inert absorbent (dry sand or earth). Scoop contaminated absorbent into an acceptable waste container. Collect all contaminated absorbent and dispose of it according to relevant regulations. Scrub the area with detergent and water; collect all contaminated water for proper disposal.

SECTION 7: Handling and storage

Do not open, disassemble, crush or burn the battery.

- 1 Do not expose the battery to water, sea water or other high-conductivity liquids.
- 2 Avoid mechanical or electrical abuse.
- 3 Do not expose the battery to temperatures outside the range of -40 °C to +80 °C.
- 4 Store in a dry location.

Recommended relative air humidity is 40 to 70 %. To minimize any adverse affects on the battery performance it is recommended that it is kept at room temperature (25 °C +/- 5 °C). Elevated temperatures can result in shortened life.

- 5 Do not store the battery in direct sunlight.
- 6 Keep the battery out of reach of children.

The storage room must be properly ventilated. It must be provided with sturdy racks with dedicated cradles for the batteries, and allow for easy removal of batteries in case of fire. The room must be designated and clearly identified as a storage area, and entrance should be restricted. The room must not be used as a general rest or work area.

Note _____

The storage room must have a sprinkler system or a fire station. A suitable fire hose (with water) must be placed outside or in the proximity of the room.

SECTION 8: Exposure control and personal protection

Airborne exposures to hazardous substances are not expected when the battery is used for its intended purpose. No protection (respiratory, skin and/or eye) is then required. If the battery is damaged, and you are exposed to the chemicals inside, proper personal protection is required.

In the event of fire or physical damage to the battery, follow the mandatory rules for personal protection.

- **Fire or explosion:** Use a self-contained breathing apparatus.
- **Exposure to noxious gas:** Use a full-face mask with minimum BE filter and protective equipment of rubber or plastic. (*B* refers to protection against inorganic gases and *E* refers to protection against sulphur dioxide.)

SECTION 9: Physical and chemical properties

The battery pack is provided as a solid and sealed unit. No chemicals are exposed during normal use and transportation.

The battery pack is provided as a solid and sealed unit. The battery pack cannot be opened to reveal the individual cells.

For additional information about the cells inside the sealed battery pack, see the safety data sheet provided by the cell manufacturer.

Cell manufacturer

- **Manufacturer:** Saft
- **Manufacturer's website:** <https://www.saftbatteries.com/>

SECTION 10: Stability and reactivity

The battery is stable. No specific handling requirements apply.

In normal use, the battery pack is placed inside the sealed transponder.

Water ingress into the transponder can cause dangerous situations.

Short-circuiting, overheating, mechanical damage and exposure to water can start chemical reactions and cause high currents inside the lithium battery. This can generate noxious gases and/or cause danger of explosion. The chemical reactions will continue without additional supply of oxygen, as the battery cells contain the necessary ingredients for maintaining the chemical reactions.

- 1 Do not open, disassemble, crush or burn the battery.
- 2 Do not expose the battery to water, sea water or other high-conductivity liquids.
- 3 Avoid mechanical or electrical abuse.
- 4 Do not expose the battery to temperatures outside the range of -40 °C to +80 °C.
- 5 Store in a dry location.

Recommended relative air humidity is 40 to 70 %. To minimize any adverse effects on the battery performance it is recommended that it is kept at room temperature (25 °C +/- 5 °C). Elevated temperatures can result in shortened life.

- 6 Do not store the battery in direct sunlight.
- 7 Keep the battery out of reach of children.

SECTION 11: Toxicological information

Acute oral, dermal and inhalation toxicity data are not available for this battery.

Risk of irritation occurs only if the battery is abused to the point of breaking the container and opening it to reveal the individual cells. If this occurs, irritation to the skin, eyes and respiratory tract may occur.

SECTION 12: Ecological information

Provided that the battery pack is disposed of according to local regulations and/or law, it will not have any environmental impact.

SECTION 13: Disposal considerations

Dispose of the batteries in accordance with local, state and federal laws and regulations for batteries.

A lithium thionyl chloride battery does not contain any heavy metals, and is therefore not regarded as special waste (contains only biodegradable parts).

A used transponder lithium battery can contain a significant amount of residual energy. It is the danger of explosion that presents a problem when disposing a battery. Used batteries must therefore be handled with the same care as new ones.

Note

For safe disposal, contact the nearest local company that has been approved to collect and dispose of lithium batteries.

SECTION 14: Transport information

Transportation of the cNODE battery must be performed in accordance with rules and regulations stated for transportation of dangerous goods in the applicable countries.

Certification: UN 38.3

Transport identification codes:

- **Aircraft:** IATA DGR
- **Sea transport:** IMDG
- **Railway:** RID
- **Road transport:** ADR

Original shipping boxes must be used for all transport.

Air transport of all units with new lithium batteries, and new separate lithium batteries, is only permitted on board cargo aircraft. The goods must be clearly labelled: CARGO AIRCRAFT ONLY.

The transponders with batteries or batteries must be shipped must be shipped in accordance with the prevailing national regulations.

- Separate lithium batteries
 - UN no. 3090, Class 9 Miscellaneous (Lithium batteries)
- Lithium batteries contained in equipment
 - UN no. 3091, Class 9 Miscellaneous (Lithium batteries)

Note

During transport a lithium battery must always be disconnected from the electronics.

SECTION 15: Regulatory information

Not applicable.

SECTION 16: Other information

The battery manufacturer's safety datasheet is available on their website.

Saft: <http://www.saftbatteries.com/>

319554	64	naming	10
347563	64	system	10
emergency procedures	44	differential inclinometer	
extending lifetime	43	arrangement drawing	68
installation	53	installation	37, 68
spare part	64	dimensions	
battery safety		technical specifications	74
accidental release measures	87	disposal considerations	
composition	85	battery safety	90
disposal considerations	90	documents	
ecological information	89	download from website	8
exposure controls	88	download	
fire fighting measures	86	documents from website	8
first aid measures	86		
handling and storage	87	E	
identification	84	ecological information	
personal protection	88	battery safety	89
physical and chemical properties	88	emergency procedures	44
stability and reactivity	89	end cap	
toxicological information	89	330498	62
transport information	90	330805	62
battery storage		spare part	62
description	51	environmental	
batterybattery safety		requirements	82
hazards identification	84	equipment	
book		handling	12
purpose	8	receipt	12
target audience	8	responsibility	12
		storage	12
C		exposure controls	
characteristics		battery safety	88
performance	71	extending lifetime	
chemical properties		battery	43
battery safety	88	F	
close the release		fire fighting measures	
description	41, 56	battery safety	86
composition		first aid measures	
battery safety	85	battery safety	86
connector		floating collar	
pin out	22	319301	65
signal pin number	22	320772	65
current meter		331151	65
349229	65	installation	39
arrangement drawing	69	spare part	65
installation	69	funnel collar	
spare part	65	spare part	66
current meter mounting clamp			
351070	65	G	
D		general supply conditions	
default transmitting		equipment responsibility	12
power	43	receipt	12
default transmitting power	43	storage	12
deployment		unpacking	12
description	40	H	
description		handling	
add weight to the release	42	battery safety	87
battery storage	51	hazards identification	
close the release	41, 56	battery battery safety	84
deployment	40		
manual release	41, 56		
modular top section	16		
MTS	16		

help
 support offices 13
 how to
 add weight to the release 42
 change the battery 53
 change to responder mode 36
 close the release 41, 56
 extend the battery lifetime 43
 install the differential inclinometer 37
 install the floating collar 39
 install the MGC 26, 39
 install the sea current meter 37
 lubricate the underwater connector 55
 manually release the transponder 41, 56
 open the transponder 52
 preform pre-deployment checks 35
 recover the transponder 45, 51
 replace a sacrificial anode 55
 replace O-rings 53
 turn off 35
 turn on 34

I

identification
 battery safety 84
 important
 reminders 7
 inclinometer
 spare part 63–64
 inclinometer cable
 322407 64
 information
 online 8
 support 13
 installation
 battery 53
 current meter 69
 differential inclinometer 37, 68
 floating collar 39
 MGC 26, 39
 sea current meter 37
 installation requirements
 environmental 82
 temperature 82
 interface cable
 spare part 64

J

jumper settings
 modem 29

L

links settings
 modem 29
 lower funnel collar
 383683 66
 lubricating
 underwater connector 55

M

main items
 provided with the delivery 11
 maintenance kit
 345595 (spare part) 59
 spare parts 59
 manual
 purpose 8
 target audience 8
 manual release
 description 41, 56
 MGC
 installation 26, 39
 spare part 63
 MGC-R2
 397960 63
 MGC-R3
 435220 63
 modem
 jumper settings 29
 modular top section
 description 16
 motion gyro compass sensor
 installation 26, 39
 MTS
 description 16

N

naming
 description 10
 note
 important reminders 7

O

O-rings
 replacing 53
 off
 turn 35
 offices
 support 13
 on
 turn 34
 online
 information 8
 open the transponder 52
 order number
 adapter 64
 battery 64
 current meter 65
 end cap 62
 floating collar 65
 funnel collar 66
 inclinometer 63–64
 interface cable 64
 MGC 63
 rack 66
 release 62
 sensor interface 63
 split 60
 TD180 60
 TD30V 60
 TD30V30H 60

- | | | | |
|--|--------|-------------------------------------|--------|
| TDR180 | 61 | opening the transponder..... | 52 |
| TDR30H | 61 | recovering the transponder | 45, 51 |
| TDR30V | 61 | replacing a sacrificial anode | 55 |
| TDR40V | 61 | replacing O-rings | 53 |
| transducer cable | 61 | turning off..... | 35 |
| transport plug | 65 | turning on | 34 |
| TTC30 | 65 | what to do before deployment..... | 35 |
| ordering | | publication | |
| spare parts..... | 59 | purpose | 8 |
| outline dimensions | | target audience | 8 |
| technical specifications..... | 74 | purpose | |
| | | this manual..... | 8 |
|
 | | | |
| P | | | |
| part number | | R | |
| adapter..... | 64 | rack | |
| battery | 64 | 320808 | 66 |
| current meter | 65 | spare part..... | 66 |
| end cap | 62 | reactivity | |
| floating collar..... | 65 | battery safety | 89 |
| funnel collar | 66 | reader | |
| inclinometer | 63–64 | this manual..... | 8 |
| interface cable | 64 | receipt | |
| MGC..... | 63 | general supply conditions..... | 12 |
| rack | 66 | recovering the transponder | 45, 51 |
| release | 62 | registered trademarks..... | 8 |
| sensor interface..... | 63 | release | |
| split | 60 | 325026 | 62 |
| TD180 | 60 | 356511..... | 62 |
| TD30V | 60 | spare part..... | 62 |
| TD30V30H | 60 | reminder | |
| TDR180 | 61 | important..... | 7 |
| TDR30H | 61 | replacing | |
| TDR30V | 61 | O-rings | 53 |
| TDR40V | 61 | sacrificial anode | 55 |
| transducer cable | 61 | requirements | |
| transport plug | 65 | environmental | 82 |
| TTC30..... | 65 | power | 78 |
| performance | | temperature | 82 |
| specifications | 71 | resetting | |
| personal protection | | the pressure relief valve..... | 55 |
| battery safety | 88 | responder mode | 36 |
| physical properties | | responsibility | |
| battery safety | 88 | equipment..... | 12 |
| pin out | | | |
| connector..... | 22 | | |
| power | | S | |
| default transmitting | 43 | sacrificial anode | |
| requirements | 78 | replacing | 55 |
| pre-deployment checks..... | 35 | safety features | |
| pressure relief valve | | pressure relief valve | 45 |
| safety features | 45 | scope of supply | |
| transponder | 55 | basic items | 11 |
| procedure | | sea current meter | |
| adding weight to the release | 42 | installation | 37 |
| changing the battery | 53 | sensor interface | |
| changing to responder mode | 36 | 347652 | 63 |
| closing the release | 41, 56 | 361410 | 63 |
| extending the battery lifetime | 43 | spare part..... | 63 |
| installing the differential inclinometer | 37 | size | |
| installing the floating collar | 39 | technical specifications..... | 74 |
| installing the MGC | 26, 39 | spare part | |
| installing the sea current meter..... | 37 | adapter..... | 64 |
| lubricating the underwater connector | 55 | battery | 64 |
| manually releasing the transponder | 41, 56 | | |

current meter	65	359429	60
end cap	62	spare part	60
floating collar	65	TDR180	
funnel collar	66	349742	61
inclinometer	63–64	375361	61
interface cable	64	spare part	61
MGC	63	TDR30H	
rack	66	345773	61
release	62	375359	61
sensor interface	63	spare part	61
split	60	TDR30V	
TD180	60	333445	61
TD30V	60	370447	61
TD30V30H	60	spare part	61
TDR180	61	TDR40V	
TDR30H	61	349743	61
TDR30V	61	375360	61
TDR40V	61	spare part	61
transducer cable	61	technical requirements	
transport plug	65	power	78
TTC30	65	technical specifications	
spare parts		outline dimensions	74
maintenance kit	59	weight	74
ordering	59	technical support	
specifications		offices	13
outline dimensions	74	temperature	
performance	71	requirements	82
weight	74	this manual	
split		purpose	8
320949	60	target audience	8
322375	60	toxicological information	
spare part	60	battery safety	89
stability		trademarks	
battery safety	89	registered	8
standard items		transducer	
provided with the delivery	11	about	15
storage		transducer cable	
battery safety	87	345772	61
general supply conditions	12	spare part	61
supply conditions		transducer type	
equipment responsibility	12	about	31
receipt	12	transponder	
storage	12	emergency procedures	44
unpacking	12	transport information	
support information	13	battery safety	90
switch		transport plug	
off	35	346211	65
on	34	spare part	65
system		TTC30	
description	10	345775	65
		spare part	65
		turn	
		off	35
		on	34
T		U	
target audience		underwater connector	
this manual	8	lubricating	55
TD180		unpacking	
319750	60	general supply conditions	12
320877	60	upper funnel collar	
spare part	60	383679	66
TD30V			
320077	60		
320662	60		
spare part	60		
TD30V30H			
313455	60		

V

vessel system
 about..... 31

W

website
 download documents 8
weight
 technical specifications..... 74

©2021 Kongsberg Maritime