



Product: Seapath 300 series  
Version: ProductSW 2.02.01 Release  
Date: 2024-09-02

## Product Software

This Release Note applies to the Seapath 300, Seapath 320, Seapath 330, Seapath 380 and Seapath 385 products. This Seapath Product Software release is an update from previous version 2.02.00. The new release comprises the following software:

- Operator software version 8.10.01
- NAV Engine version 4.34.02

For this release the following additional software is used:

- Linux image version: ELinOS 2023-0118
- GNSS version: OEM7 v.7.08.09
- Fugro HP library: 8.35a
- Win10e version 6.02
- RinexConverter version 2.00.01

For this release the following hardware is supported:

- Processing Unit HW:
  - HWP2010 w/OEM7700/719, ELinOS 6.2
  - ISP2020 w/OEM7700, ELinOS 6.2
- HMI Unit HW:
  - HWP2010 1U, Win 10/Win Embedded
  - MC340, Win 10
  - MC360, Win 10

### New functionality

- *Improved handling of high ionospheric activity.* By weighting down single frequency GNSS receiver and all long-distance single frequency reference stations in the software, the stability of the position output has been improved when the ionospheric level is high. In earlier Seapath software, systems with just single frequency GNSS on one of the receivers (Seapath 320, 330 and some 380) the output of position could be stopped due to ionospheric activity.
- *Seapath systems with one single frequency receiver.* Added possibility to ignore position from the single frequency receiver, but still use it for heading determination.

**Corrected errors**

- *HP, XP*. A bug in use of group delay is fixed in new software. Caused long convergence time of the filter.

## Installation of software

Upgrade of both HMI and NAV Engine is supported from an USB memory stick. To upgrade a Seapath 300, 320, 330, 380 or 385 product to latest software, proceed as follows:

### **Disclaimer**

-----  
*This update should not be performed during, or prior to, critical operations. The system will be offline for the duration of the upgrade, thus no outputs will be available for external equipment. After the update has been completed the system should be allowed in monitoring mode, and not utilised for navigation or DP operations, for at least four hours to ensure proper operation.*

*The system should be monitored closely after the update. If any doubt about the performance of the system please do not hesitate to contact the service department at Kongsberg Discovery AS.*

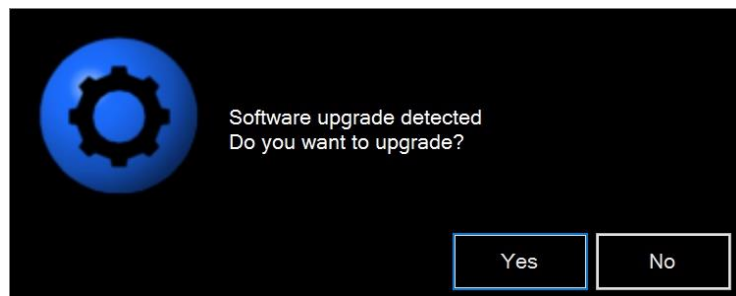
*The update must be done in accordance with Kongsberg Discovery AS procedures (Installation manual, release notes etc.) and is done at the customers own risk.*

-----

**Note** When upgrading from version older than 2.01.00, you must first upgrade to version 2.01.00, before upgrading to this version. See the Release Note for version 2.01.00 for how to proceed with migration of the software to new version of the Operating System (OS).

### **Software Upgrade**

1. Perform a system configuration backup by selecting **Copy configuration** from the **Tools** menu. It is recommended to run this program twice; once with a memory stick as the target and once with a folder on the Seapath hard disk as the target.
2. If you have received a Seapath system upgrade memory stick from Kongsberg Discovery, please continue from step 4.
3. Extract the Seapath.zip received via email from Kongsberg Discovery to the root folder of a USB memory stick. Verify that the memory stick contains a folder named Seapath in the root directory after extraction.
4. Insert the USB memory stick to the USB port in front of the Seapath HMI Unit.
5. The following message will appear in the upper left corner of the screen:



6. Click **Yes** to run the software upgrade.

7. The upgrade system will now inform about the versions involved. Click **Install** to start the upgrade.
8. The following message is displayed:



*Caution: If the memory stick is removed before prompted by the system, the upgrade will fail and leave the Seapath system in an indeterminate state.*

9. Seapath software upgrade will now start, and progress information will be updated in the dialog throughout the process. Follow the instructions on the screen. Do not respond to any other messages appearing on the screen, than the one in the upgrade dialog box.
10. The upgrade requires a restart of both the Processing and HMI Unit. The Processing Unit and HMI Unit will automatically reboot when needed.
11. After the reboot, the Seapath is up and running on the new software version.