

## 200 kHz Single-beam transducer



### Introduction

The 200-7F is a compact, single-beam transducer in a streamlined housing intended for hull mounting on smaller vessels.

### Order number

KSV-065414

### Technical specifications

Resonant frequency ..... 200 kHz  
Circular beamwidth ..... 7 deg  $\pm$ 1  
Directivity index ..... 28.5 dB  
Equivalent two-way beam angle ..... -21.0 dB  
re 1 steradian

#### Impedance:

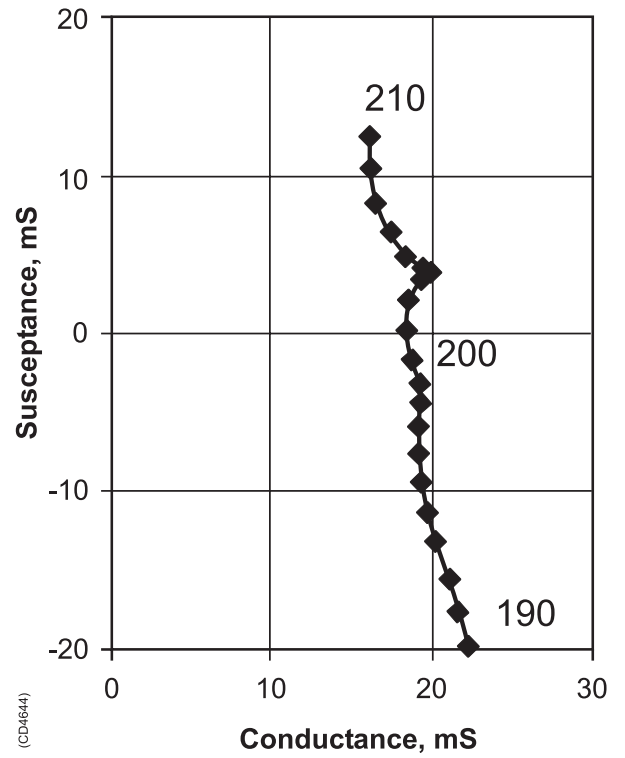
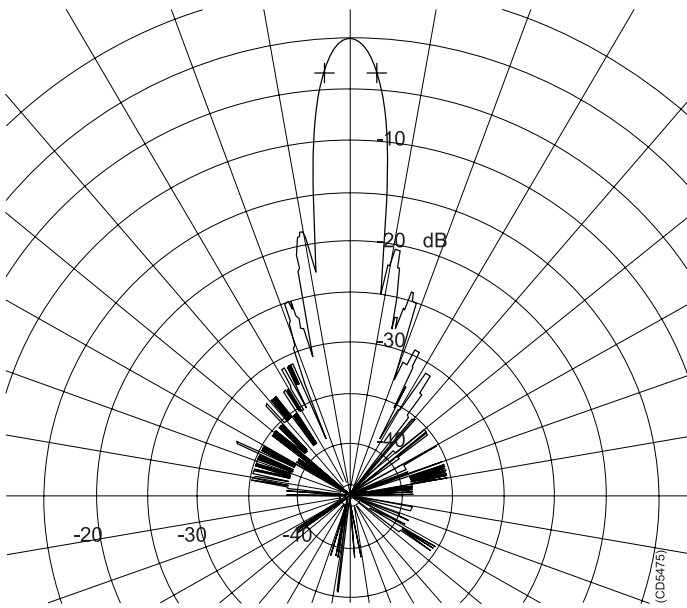
Nominal ..... 60 ohms  
Max. variation in  $|Z|$  ..... 45 - 80 ohms  
Max variation in phase angle .....  $\pm$ 30 deg  
Transmitting response ..... 180.0 dB  $\pm$ 2  
re 1  $\mu$ Pa per V  
Receiving sensitivity, open circuit ..... -185 dB  $\pm$ 2  
re 1V per  $\mu$ Pa

#### Electroacoustic efficiency:

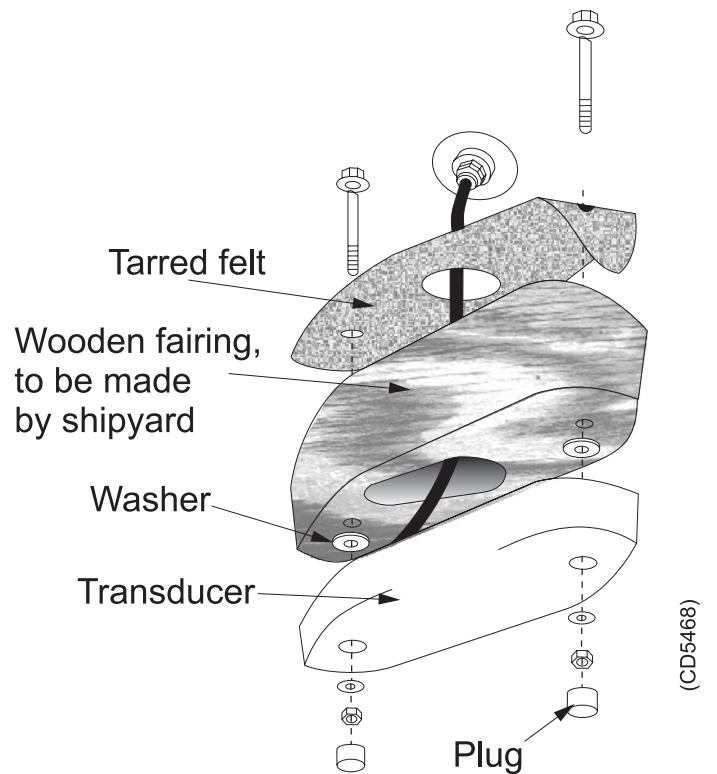
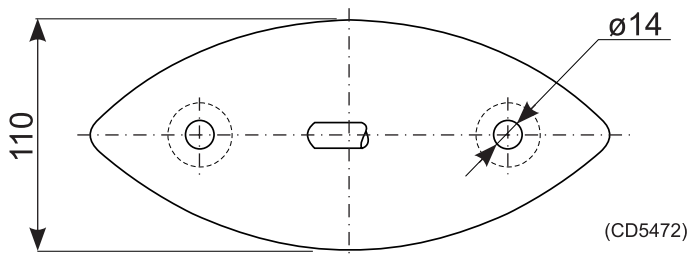
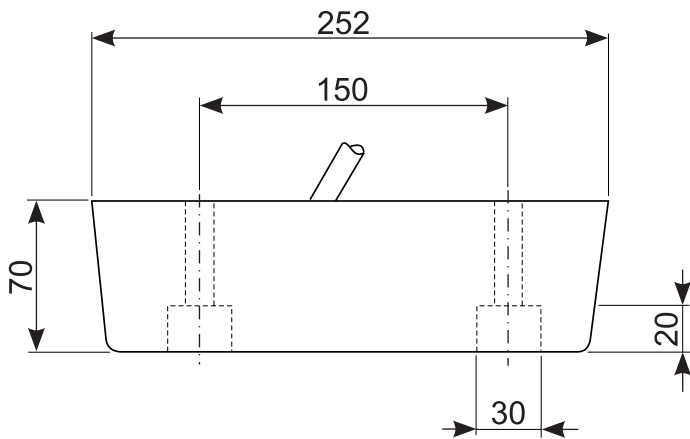
Typical ..... 0.75  
Minimum ..... 0.50  
Maximum input power ..... 1000 W  
Maximum duty cycle (at max power) ..... 0.02  
Maximum installation depth ..... 20 m

Cable length ..... 15 m  
Weight without cable ..... 1.9 kg  
Storage temperature ..... -20 to 70 °C

## Data



## Installation



### Manufacturer:

Simrad AS  
 Strandpromenaden 50  
 P.O.Box 111  
 N-3191 Horten  
 Telephone: +47 33 03 40 00