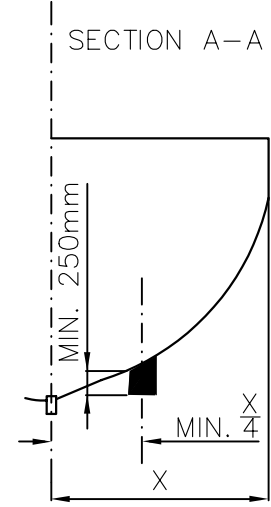
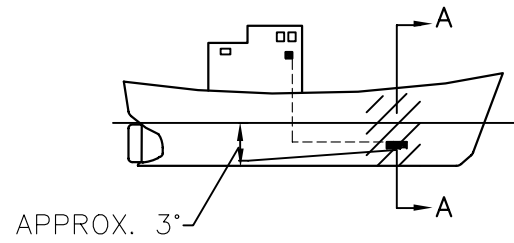
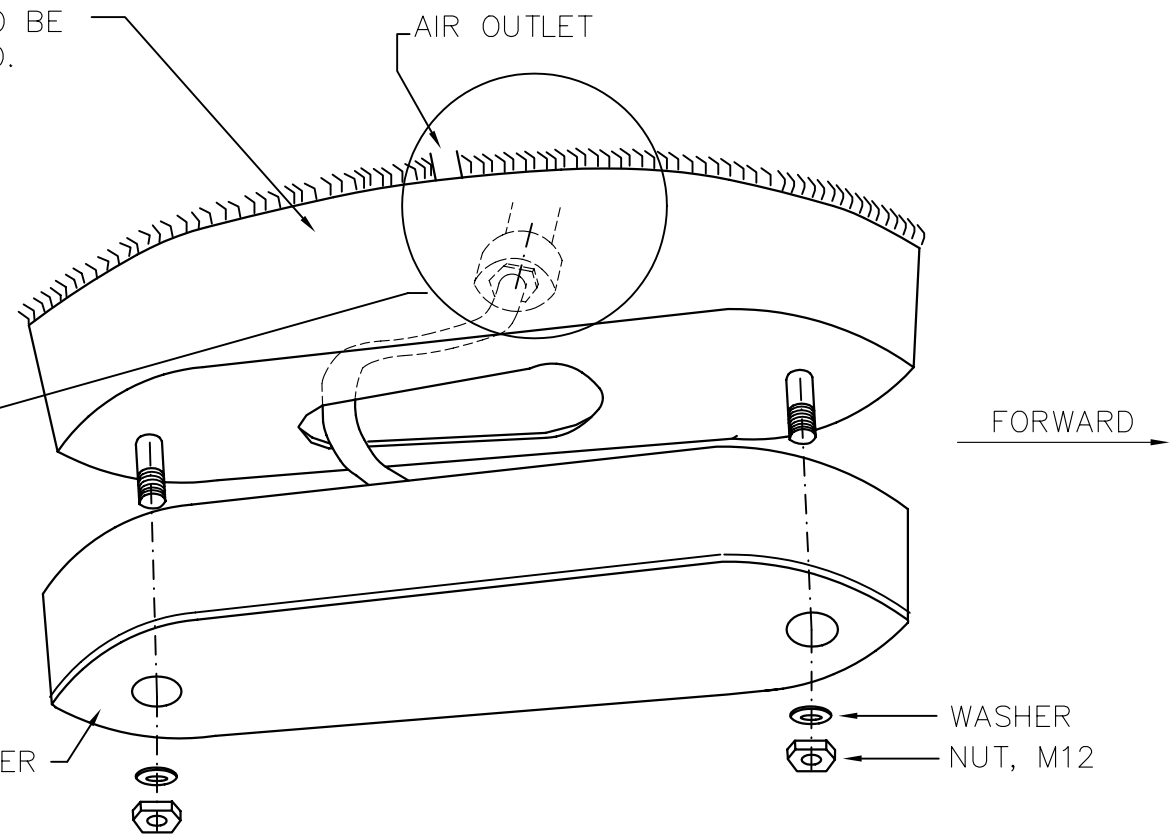


RECOMMENDED LOCATION OF TRANSDUCER



STEEL FAIRING, TO BE MADE BY SHIPYARD.



NOTICE FORWARD ⇨ ENGRAVED ON THE TRANSDUCER HOUSING.

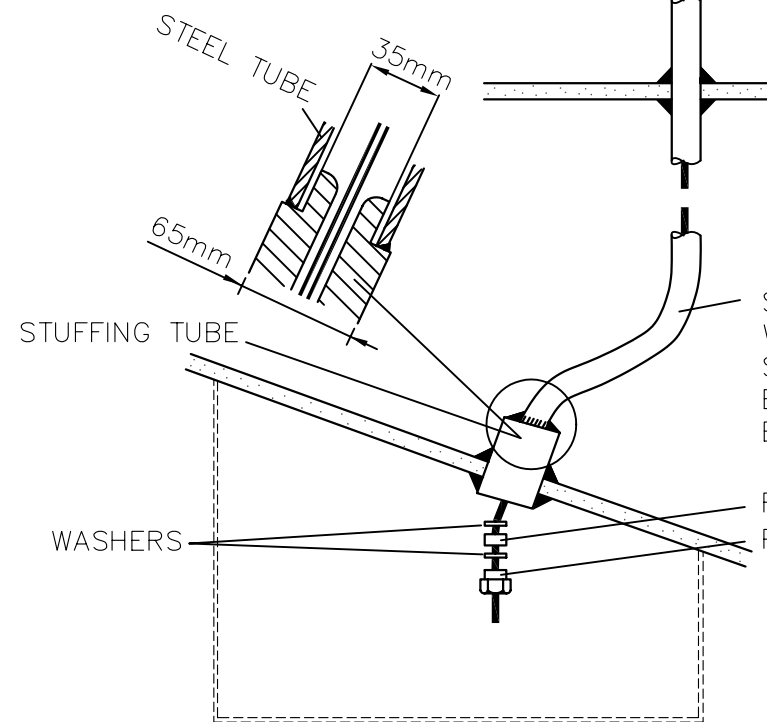
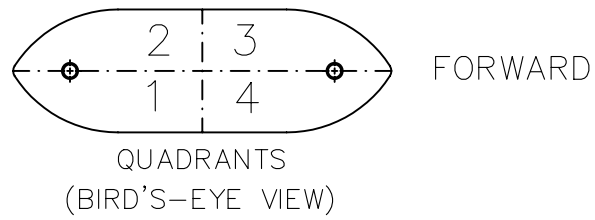
The transducer housing is made of polyurethane and in general it must not be painted, due to the risk of chemical reaction.
 One type of antifouling paint which can be used is:
 Antifouling seamate HB 66 from Jotun, Sandefjord, Norway or
 International Paints:
 -HISOL 900
 -INTERSMOOTH THIN-FREE SPC.

NEAR SOUNDER

Transducer Cable

- BL BK CH. 1
- WH WH
- O BK CH. 2
- WH WH
- GN BK CH. 3
- WH WH
- BN BK CH. 4
- WH WH

ALTERNATIVE CABLE TYPES



STEEL TUBE, MIN. 35mm INSIDE DIAM.
 WALL THICKNESS MIN. 6mm (IF GALVANIZED 4.5mm)
 SIMRAD RECOMMENDS TUBING THE TRANSDUCER CABLE BETWEEN THE SOUNDER AND TRANSDUCER TO MINIMIZE ELECTRICAL INTERFERENCE.

NB: DO NOT LIFT THE TRANSDUCER BY IT'S CABLE:

REV./SIGN.	9170	TW	C	KSK						
DATE	93.11.11		00.01.20							
PROJ. METHOD					UNLESS OTHERWISE STATED, TOLERANCE: DIM.: ----	THREAD: 6g/6H	PARTS LIST:	SIMRAD A KONGSBERG Company		
SCALE	-				Mounting of transducer on steel vessel			SHEET 1 OF 1	SH.SIZE: A3	REV.:
DRAWN	92.12.15		TW					820-110378		C
CHECKED	92.12.16		HK							
APPROVED	92.12.17		HB		ES70-11			FILE NO.:	640-75	