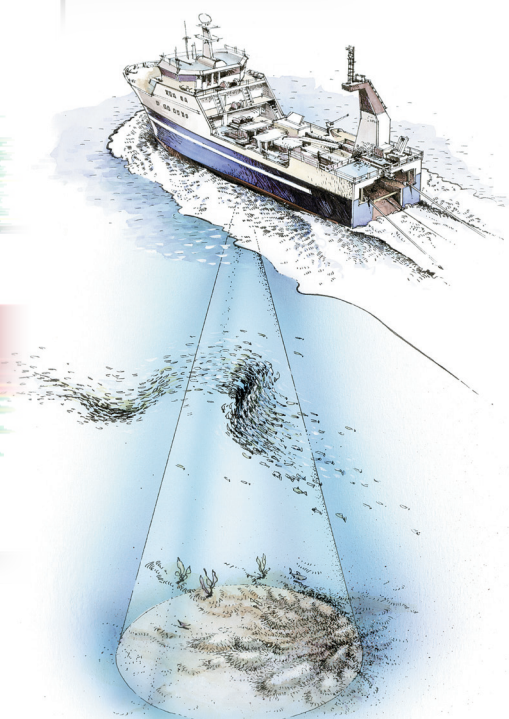
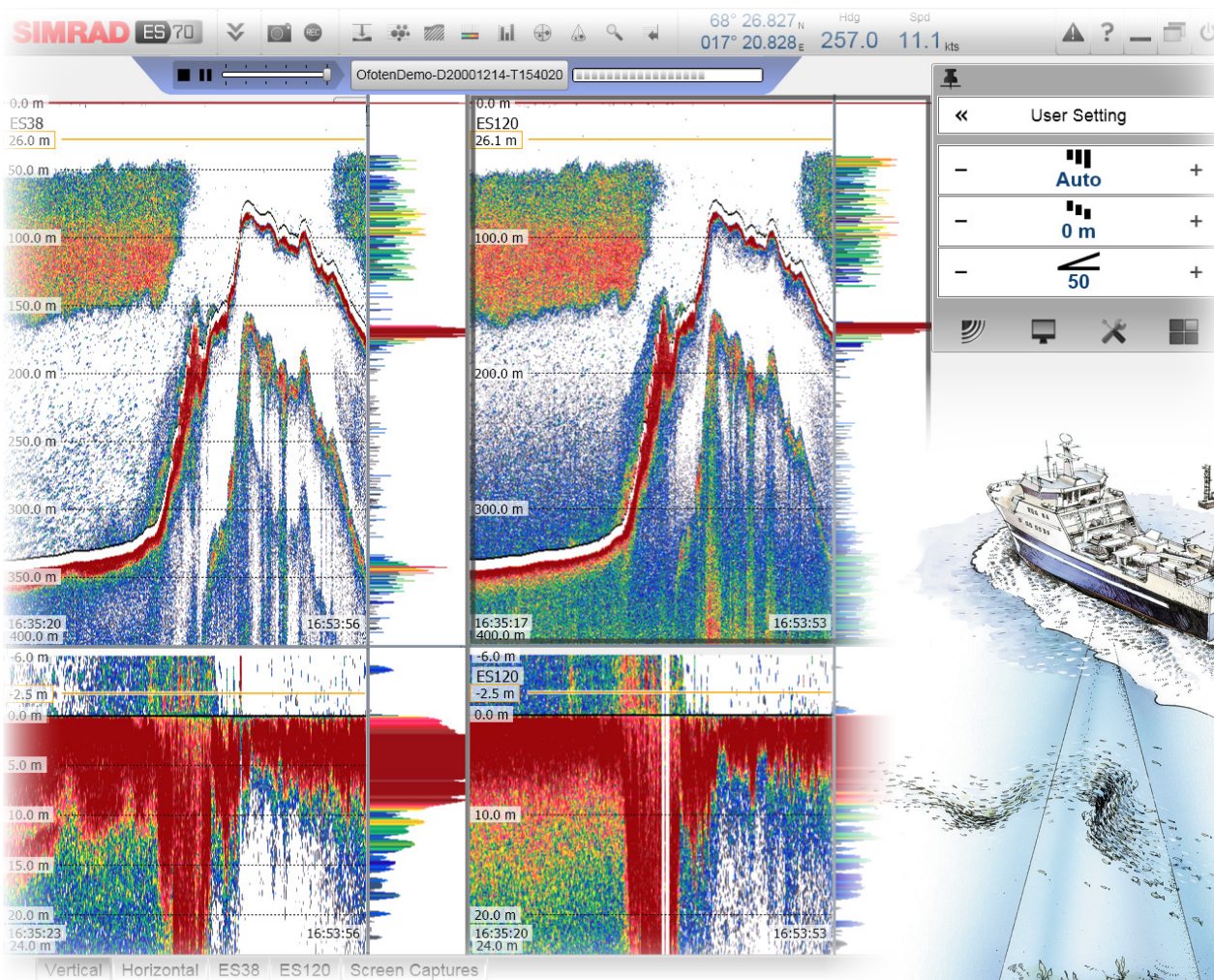


# Software release note

## Simrad ES70 SW 1.2.1.



### Introduction

This document describes the software and other changes introduced with the following new software versions:

- ES70 SW v1.2.1.

This software controls all functionality in the Simrad ES70 echosounder. This includes transmission and reception, interfaces with external peripherals and sensors, and all user interface (echograms and menus).

### Software changes

These are described on page 2.

### Documentation

The English and Spanish end user

manuals have been updated with this release. All manuals are provided on the ES70 software media, and all can be downloaded from the product website:

[www.simrad.com/es70](http://www.simrad.com/es70)

The ES70 Reference manual is also provided as context sensitive on-line help in English and Spanish.

### Licensing

In order to use all the functionality provided by the ES70 software, licenses are required.

Access the licence registration form from the product website [www.simrad.com/es70](http://www.simrad.com/es70).

This form must be filled in by all dealers requesting licences for the ES70.

A licence is only required for a new software installation, or if new functionality is purchased. A normal software update will not require a new licence.

Turn the page!

## Software changes

The numbers are our task identifications, and are provided for internal reference only.

### 4983/5828/6102: Target Strength

Target Strength (TS) detector improved. Minimum value in TS detector now linked to minimum value in histogram. Improved algorithms to identify single targets for size estimation.

### 12793: New feature

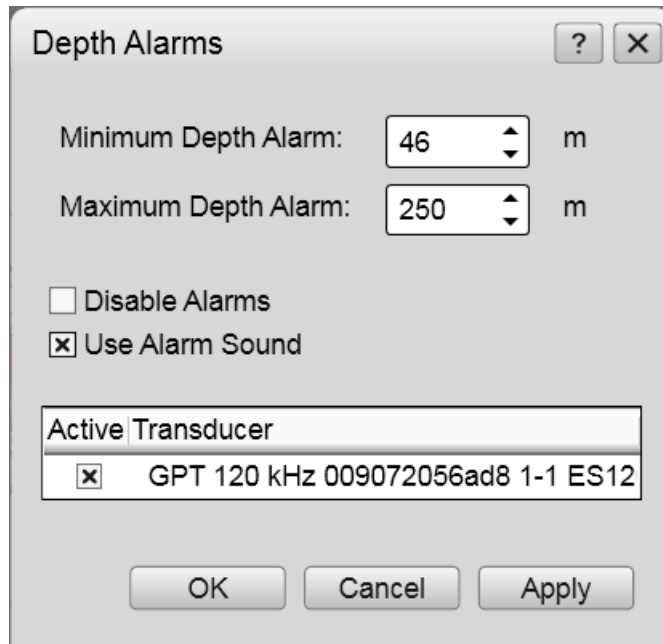
Alarm for minimum and maximum

water depth has been

implemented. The

feature will provide a visible and audible

alarm if the water depth exceeds the defined limitations.



### 13159: New feature

The ES70 now offer you the possibility to request a time limited trial license to test out additional software options.

### 13632: Improved biomass calculations

The algorithms used to calculate the biomass have been improved.

### 7154: Message dialog

It is now possible to inhibit the appearance of the Message dialog sound.

### 7138/7152: Time stamp , history files

The time stamping of the history view follow the general display request to show time as UTC or local time.

### 7151: Missing trawl foot rope in History view

Drawing of foot rope added to History view.

### 7153: Automatic pulse duration

Automatic pulse duration is now based on current water depth. In previous version this was based on Echogram range.

### 7155: Split file button

Manual splitting, start on new file, button active.

### 7157: Event button

Event button added to Title bar.



### 7164: Instability in GPT communication

The communication with the GPT has been improved. This causes less loss of contact and lost samples.

### 7166: Ping to ping filtering

The ping to ping filtering has been improved for bottom echograms and rough seabed.

### 7167: Bottom detector

The sensitivity of the bottom detector has been improved to increase the capability to detect bottom with low backscatter values.

### 12808: 12 kHz extended range capability

Maximum depth ranges has been increased to 12500 meters.

Additional minor bugs fixed.

## Simrad

Kongsberg Maritime AS  
Strandpromenaden 50  
P.O.Box 111  
N-3191 Horten, Norway

Telephone: +47 33 03 40 00  
Telefax: +47 33 04 29 87  
[www.simrad.com](http://www.simrad.com)  
[simrad.sales@simrad.com](mailto:simrad.sales@simrad.com)

# SIMRAD