

# DUAL-AXIS SCANNING (DAS) SONAR



KONGSBERG

## for Long-Term Offshore Monitoring

The Dual-Axis Scanning (DAS) Sonar is a profiling system designed for long-term seabed or structure monitoring.

This scanning sonar works with both the MS1000 software program or in “standalone mode” where the data is logged in the head and transmitted to shore via cable or wireless telemetry.

The continuous 3D-surveying capability of the DAS provides crucial information on the dynamics of sediment scour and aggregation, and its rugged design is ideal for deployment on structures located in high-current or harsh offshore environments.

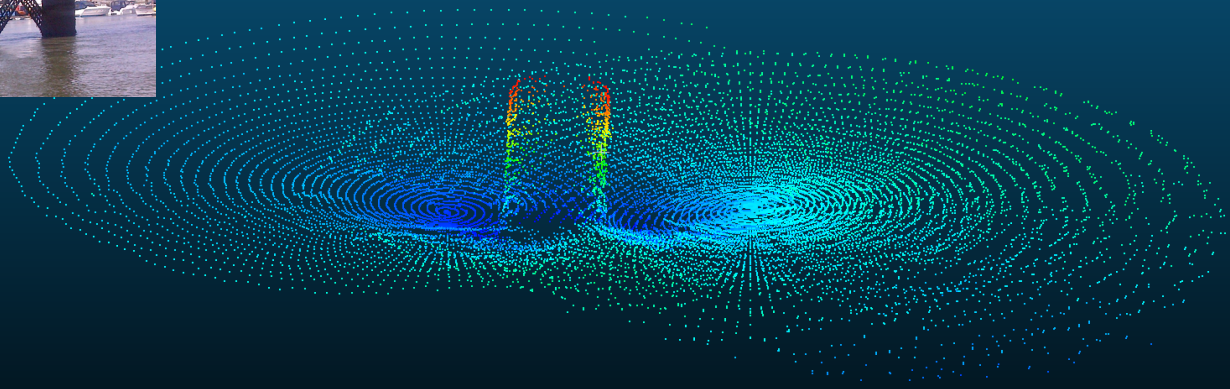
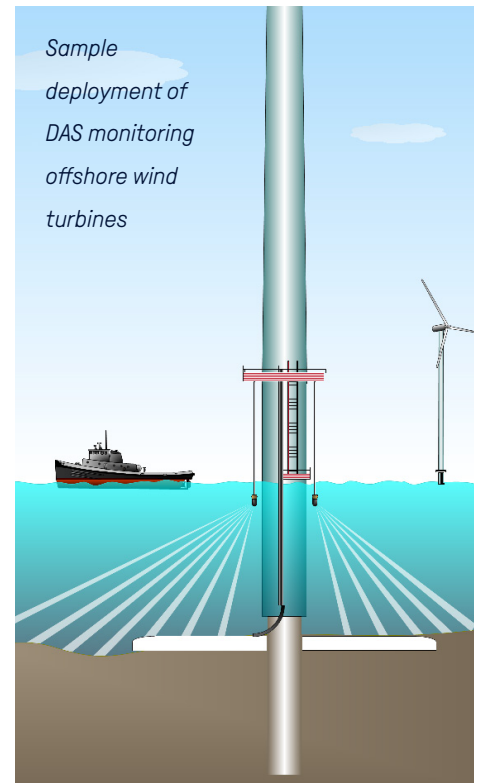
The DAS outputs an X, Y, Z serial data string of profile points that can be processed by many digital terrain modeling software packages including Kongsberg VistaGround and EIVA NaviSuite Edulis (specific to scour monitoring).

### Features

- Designed for long-term deployment in harsh conditions
- Operates single or multiple DAS heads
- Covers large areas
- Outputs a 3D profile-point digital data string
- Operates with the MS1000 software or in ‘standalone mode’

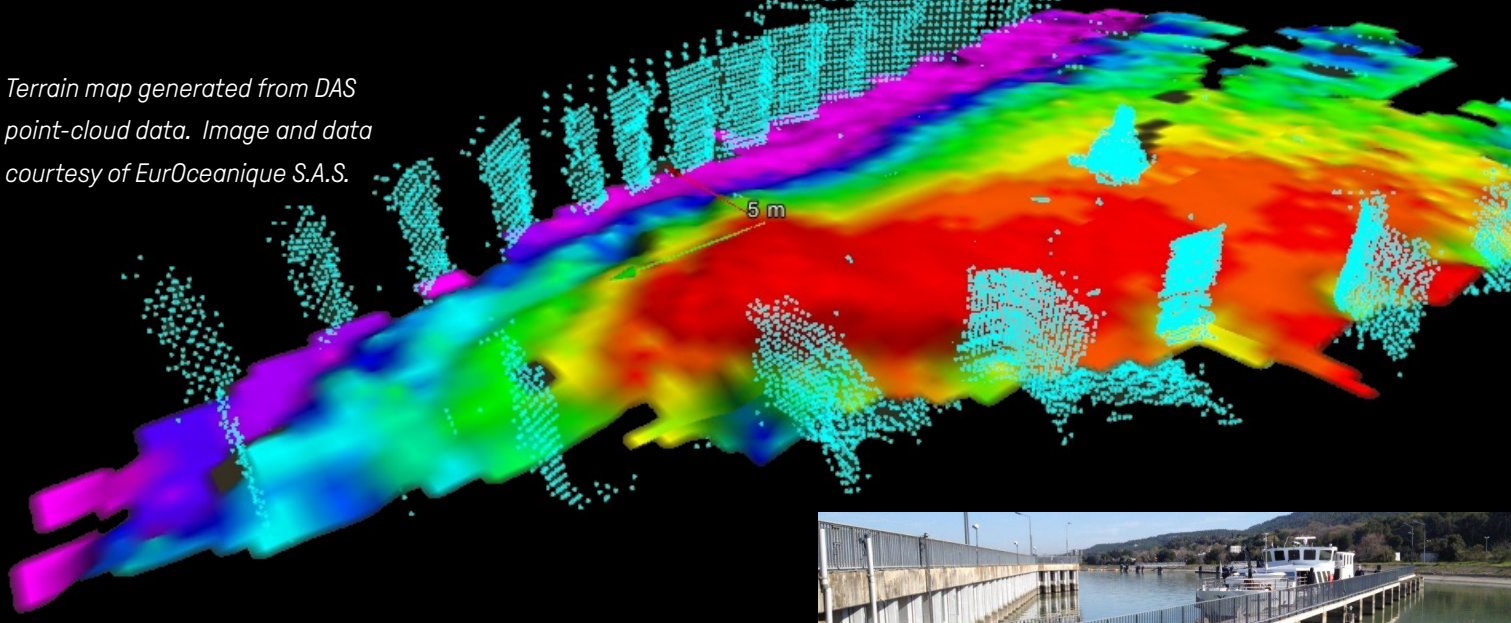
### Applications

- Offshore wind-turbine scour detection
- Underwater bridge substructure and dock inspections
- Dam and water intake surveys

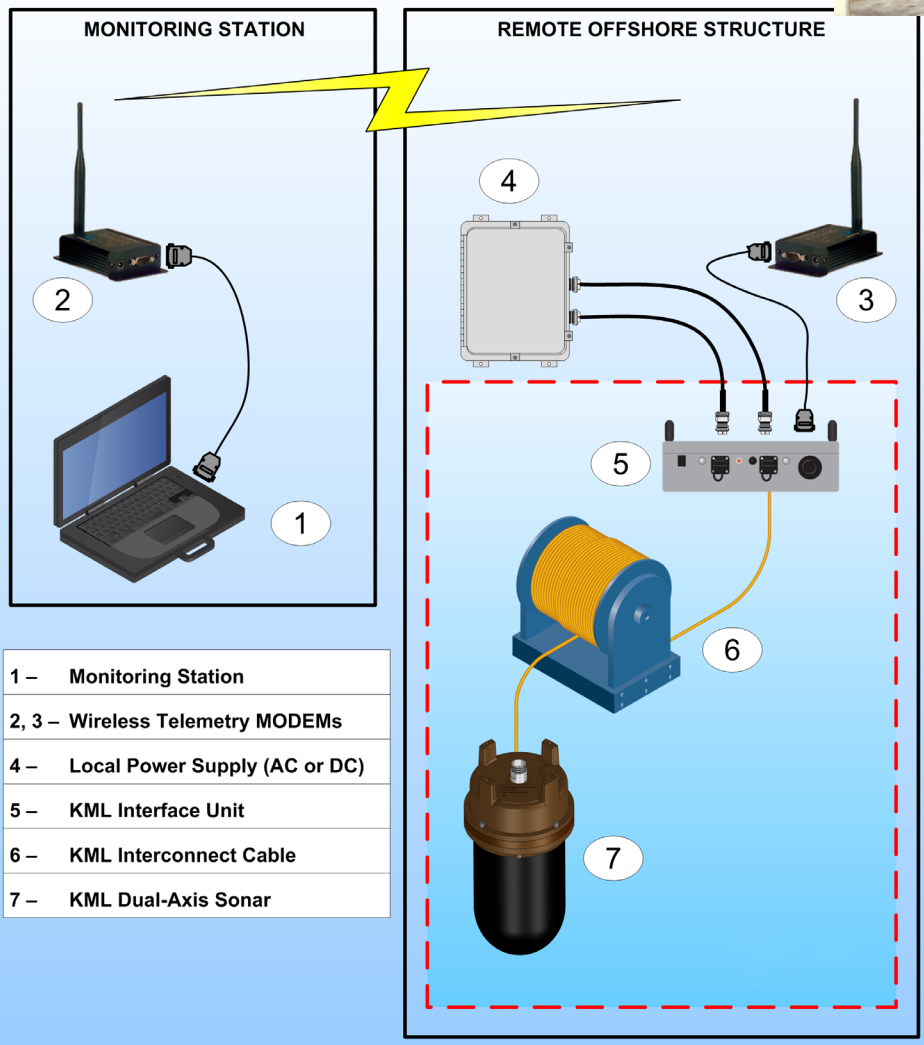


*DAS data from rail bridge - north piling view*

Terrain map generated from DAS point-cloud data. Image and data courtesy of EurOceanique S.A.S.



## OFFSHORE MONITORING SYSTEM



### Operation and configuration

The sonar head is designed primarily for pole-mount deployment. The pole mount can be attached either to the structure of interest or to the side of a vessel positioned over the desired location.

A single or multiple heads can be integrated into a system to monitor a large area.

### Operating modes

Standalone Mode (default):

- Uses host or third-party supplied power
- Acquires profile data using pre-defined configurations
- Interfaces with other third-party equipment installed in remote locations

MS1000 Mode:

- The MS1000 processing software on a PC operates the sonar
- Data is visualized on screen and recorded for further processing
- All MS1000 Standard Edition capabilities are enabled

### KONGSBERG MESOTECH

1598 Kebet Way, Port Coquitlam, BC, Canada, V3C 5M5  
 Phone: 604-464-8144  
 Toll-Free: 1-888-464-1598

kongsbergmesotech.com  
 km.sales.vancouver@km.kongsberg.com



KONGSBERG