



KONGSBERG



FEATURES

- Interfaces two analogue CNR radios
- CNR to CNR relaying
- Fully IP based
- Integrated with K-TaCS
- SIP client
- Management from web or Communication Management System (CMS).

RIU Radio Interface Unit

Combat Net Radio Access Unit

The RIU is a combat net radio access unit for K-TaCS and the EIS based intercom system. RIU may be used in any IP network supporting SIP clients.

PTT control over RTP or through the use of SIP INFO messages for connected CNR radios.

It supports connection of different kinds of CNR. The analogue interfaces are configurable making it possible to connect to radio analogue audio interface.

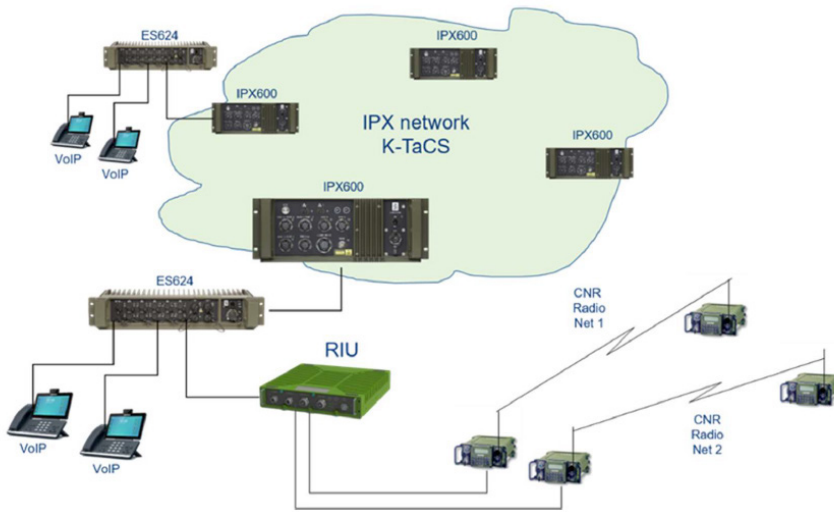
RIU operates using Push-to-Talk (PTT) and Audio Receive (AR). VOX operation is also supported.

The RIU enables users on CNR to integrate to other subscribers in the K-TaCS.

The RIU performs analogue to/from IP conversion.

The RIU can be connected to any kind of standard IP router.

RIU is designed as a 19"/2, making it possible to mount two units side-by-side within an 19" rack. Mounting brackets are available for 19" installation.



RIU used to convert analogue radios to SIP clients towards the IP router.



Communication in the field

TECHNICAL DATA

Interfaces	1 Ethernet 1 Gbit/s (network) 1 Ethernet 100 Mbit/s (management) 2 analogue CNR
Protocols	IP versions IPv4 LAN protocols Ethernet
Functions	SIP client DHCP client NTP client
Management	Web CMS
Power Supply	18 – 32 VDC PoE (Power over Ethernet) 15 W power consumption
Environmental	Operating temp.: -40°C to +55°C Environmental: MIL-STD-810 army ground EMC: MIL-STD 461 army Ground
Dimensions	Height: 44 mm Width: 219 mm Depth: 255 mm Weight: 2,5 kg

Kongsberg Defence & Aerospace AS
Division Defence Systems
P.O. Box 1003
N-3601 Kongsberg, Norway
Phone: +47 32 28 82 00

Sales and marketing:
dls.post (at) kongsberg.com

Through Life Support:
tls.support (at)kongsberg.com