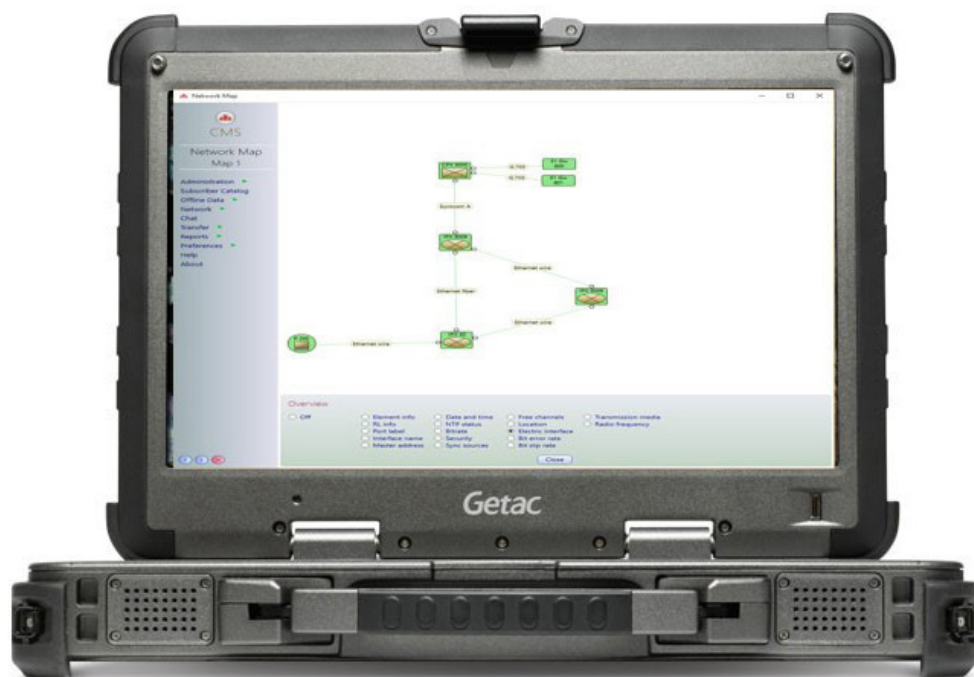




KONGSBERG



FEATURES

- Network management
- Management of the K-TaCS equipment
- Router management
- Subscriber management
- Radio management
- Offline planning
- Chat

CMS Communication Management System

Network and Equipment Management

The KONGSBERG CMS is a Windows10 based application for management of total communication systems, single networks, nodes and single units with respect to communication and equipment parameters as well as facilities within the K-TaCS network.

- Supports network management protocols based on the internet community environment.
- Offers provisions for both operation and maintenance of the KONGSBERG equipment within the K-TaCS network.
- The KONGSBERG CMS application contains information about and controls the tactical communication network, down to the single subscriber profile.
- Offers ease of use from an intuitive Graphical User Interface (GUI)
- Management may be done on local equipment, remote locations and within the complete network. A hierarchical network structure is supported, as well as centralized management.

Network control

The network control is the essential part of a network management system.

The following items are the main functions of the network control:

- Network map
- Overview of different network related functions
- Radio link configuration
- IP configuration
- Subscriber catalogues
- Alarm and event handling
- Offline planning

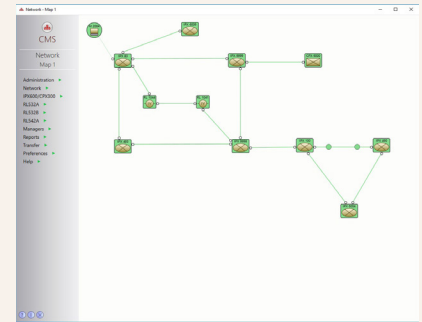
The network map is automatically updated when changes in the network structure occur (e.g. removal of a link between two locations). This ensures that the network map always gives a true picture of the network.

The network map also gives indications when changes related to the network structure occur, e.g. through active alarm monitoring and fault analysis. Status colours on the symbols and connections indicate these changes.

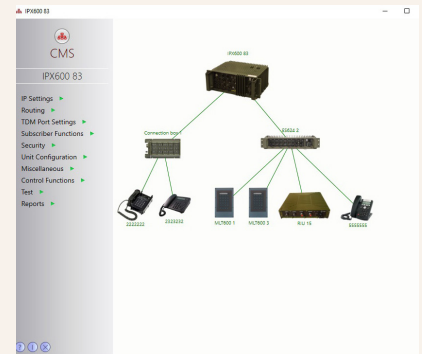
When double clicking on an element in the network map, a new window opens showing the physical layout of the equipment. The selected equipment can be managed in these windows. This includes IP configuration, interface configuration, subscriber configuration, radio configuration, alarm listing and status listing.

Predetermined configurations may be downloaded to each equipment. The latest configuration and status information is always stored in each equipment. This minimizes issues with centralized storage of configurations.

For communication between CMS operators, an integrated chat service is available.



Network Map



Node Management



Equipment Management